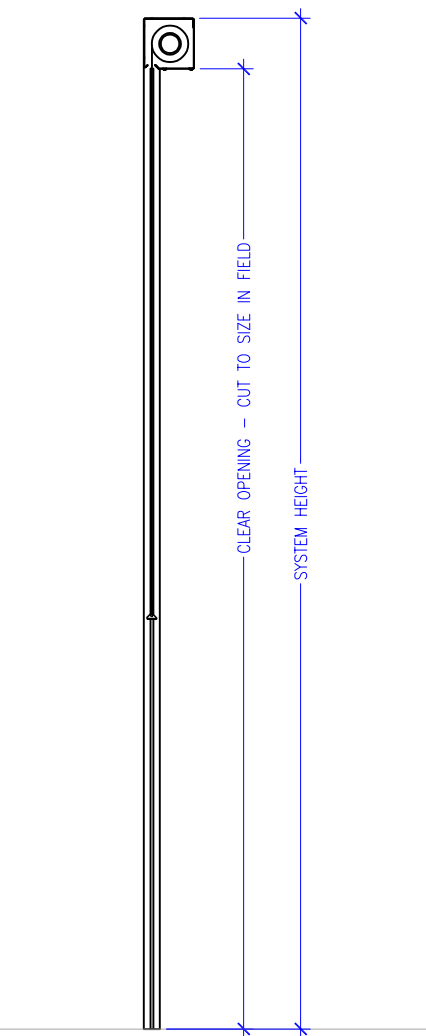
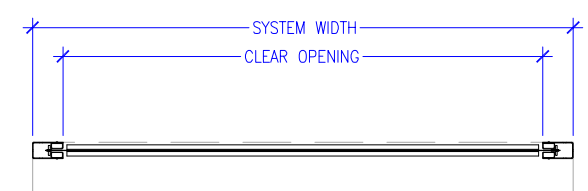


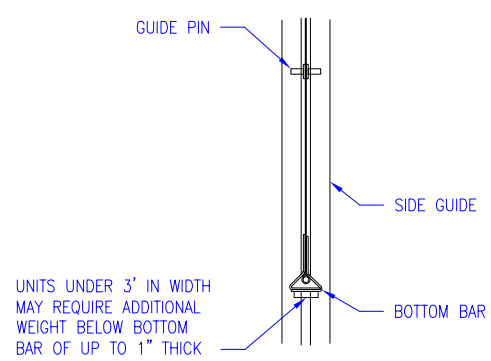
1 M2100E ELEVATION  
SCALE: 1/2" = 1'-0"



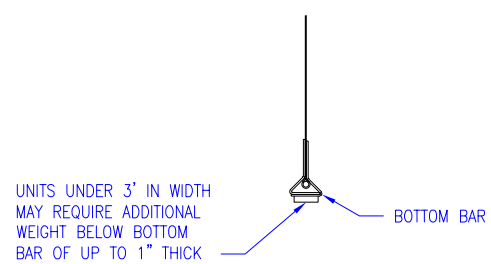
2 M2100E SECTION  
SCALE: 1/2" = 1'-0"



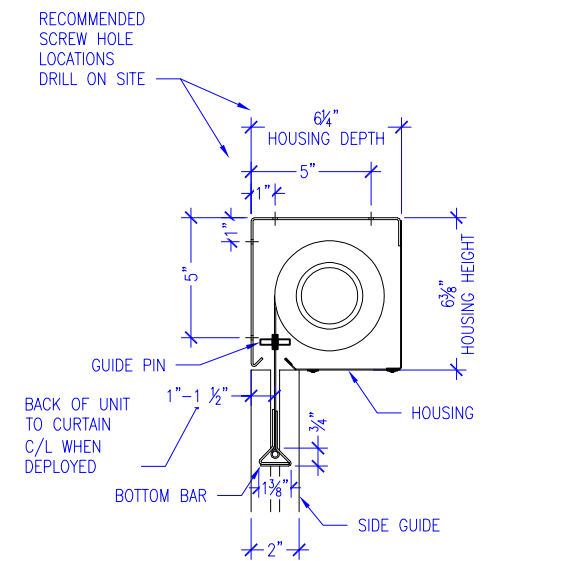
3 M2100E PLAN  
SCALE: 1/2" = 1'-0"



UNITS UNDER 3' IN WIDTH  
MAY REQUIRE ADDITIONAL  
WEIGHT BELOW BOTTOM  
BAR OF UP TO 1" THICK



UNITS UNDER 3' IN WIDTH  
MAY REQUIRE ADDITIONAL  
WEIGHT BELOW BOTTOM  
BAR OF UP TO 1" THICK



RECOMMENDED  
SCREW HOLE  
LOCATIONS  
DRILL ON SITE

FACE MOUNT HOLE LOCATION  
#10-#14 FASTENER

JAMB MOUNT  
HOLE LOCATION  
#10-#14 FASTENER

4 M2100 COMPONENTS  
SCALE: 1 1/2" = 1'-0"

- M2100 FIRE NOTES:
- SMOKE GUARD FIRE RATED UNITS (HOUSINGS & SIDE GUIDES) TO BE MOUNTED TO A FINISHED, FIRE RATED ASSEMBLY OR STRUCTURE PER YOUR APPLICATION.
  - CLIENT TO PROVIDE CONTINUOUS MOUNTING SURFACE FOR STRUCTURAL AND SHEET METAL ATTACHMENT.
  - TOLERANCE: FLOOR TO CEILING VARIANCE MUST BE WITHIN +/- 1/2" ACROSS LENGTH OF MACHINE..
  - ORDER LENGTHS TO BE AT 1/4" INCREMENTS ONLY.
  - DIMENSIONS TO NOT INCLUDE HEADS OF EXTERNAL FASTENERS.
  - STRUCTURAL DESIGN TO USE LOADS OF 11 LBS/FT
  - STRUCTURAL ATTACHMENT TO BE WITHIN 6" OF EACH END AND MAX OF 36" ON CENTER. (2) SCREWS PER LOCATION, DRILLING REQUIRED ON SITE.

- M2100 SMOKE NOTES:
- SMOKE GUARD SMOKE RATED UNITS (HOUSINGS & SIDE GUIDES) TO BE MOUNTED TO A FINISHED, SMOKE RATED ASSEMBLY OR STRUCTURE PER YOUR APPLICATION.
  - CLIENT TO PROVIDE CONTINUOUS MOUNTING SURFACE FOR STRUCTURAL AND SHEET METAL ATTACHMENT.
  - TOLERANCE: FLOOR TO CEILING VARIANCE MUST BE WITHIN +/- 1/2" ACROSS LENGTH OF MACHINE..
  - ORDER LENGTHS TO BE AT 1/4" INCREMENTS ONLY.
  - DIMENSIONS TO NOT INCLUDE HEADS OF EXTERNAL FASTENERS.
  - STRUCTURAL DESIGN TO USE LOADS OF 11 LBS/FT
  - STRUCTURAL ATTACHMENT TO BE WITHIN 6" OF EACH END AND MAX OF 36" ON CENTER. (2) SCREWS PER LOCATION, DRILLING REQUIRED ON SITE.

REVISION		
REVISION NUMBER	REVISION DATE	REVISION DESCRIPTION
####	####	####
####	####	####
####	####	####
####	####	####

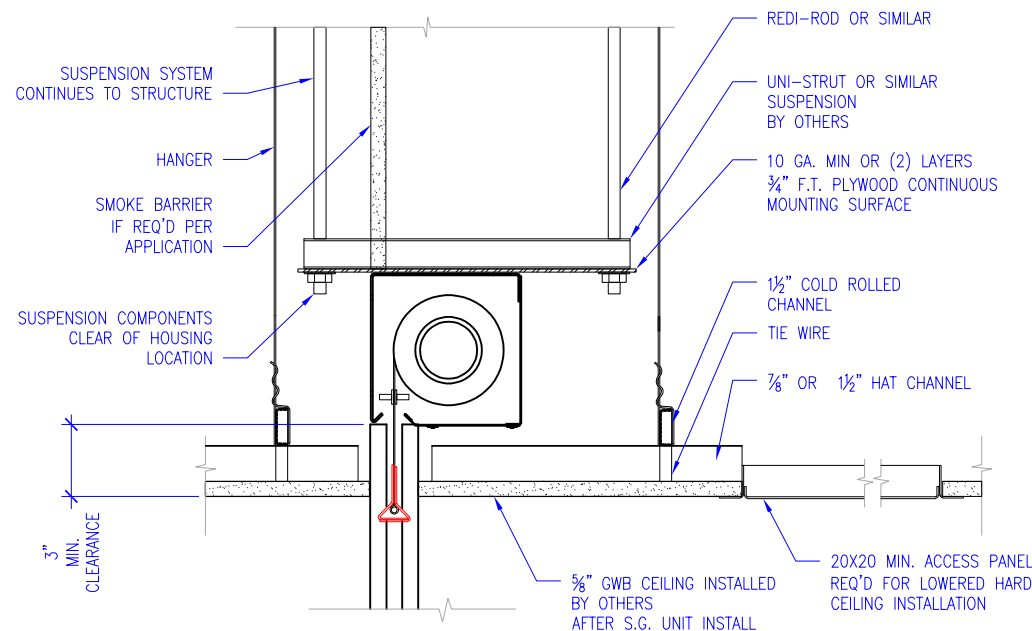
QUOTE: ####  
PROJECT: ####  
DIST: ####

DESIGN SET: ####	SIZE <b>B</b>
MODEL: ####	SHEET ---
SHEET TITLE: M21E-1	
DRAWN: HGK	4.1.2022

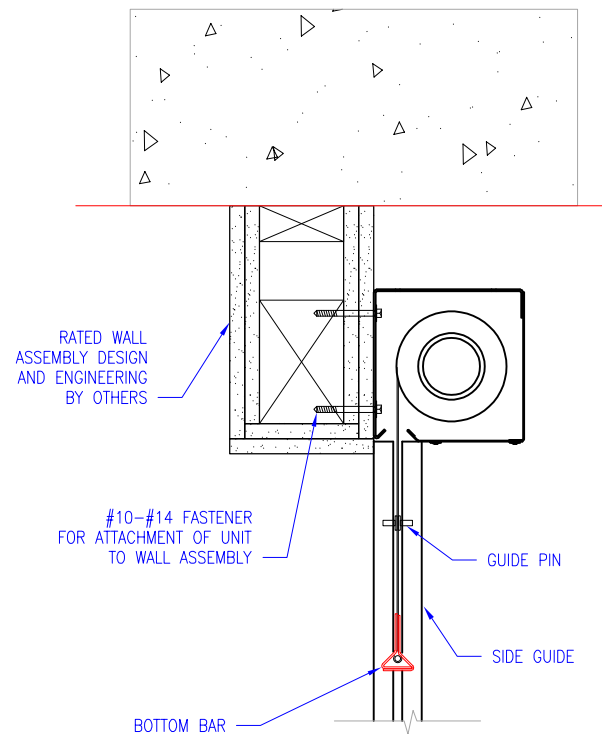
SIGNATURE REQUIRED

DATE

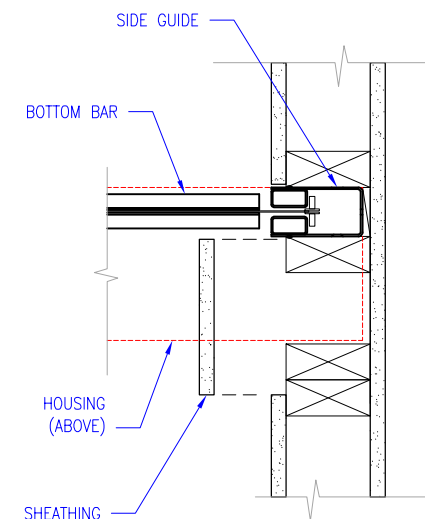
THESE DRAWINGS SHOW OUR INTERPRETATION OF THE PRINCIPAL PLANS AND SPECIFICATIONS. THEY ARE SUBMITTED AS CHECK PRINTS REQUIRING REVIEW AND POSSIBLE REVISIONS TO DETAILS AND/OR DIMENSIONS. BEFORE FABRICATION OF MATERIALS CAN BEGIN, DRAWING PACKAGE MUST MATCH O.P.M. ORDER AND BE RETURNED SIGNED AND DATED. IF THERE ARE SIZE DISCREPANCIES BETWEEN THIS DRAWING PACKAGE AND O.P.M. ORDER, THESE DRAWING SUPERCEDE O.P.M. DIMENSIONS. IF CONSIDERABLY DIFFERENT, A RE-SUBMITTAL OF O.P.M. ORDER WILL BE REQUIRED. THIS SIGNATURE INDICATES PURCHASER'S FULL ACCEPTANCE OF DETAILS SHOWN AND THE PRODUCT IN CONFORMANCE TO SAME. THESE DESIGNS AND DRAWINGS ARE THE EXCLUSIVE PROPERTY OF SMOKE GUARD, INC. AND ARE NOT TO BE USED OR DUPLICATED WITHOUT PERMISSIONS.



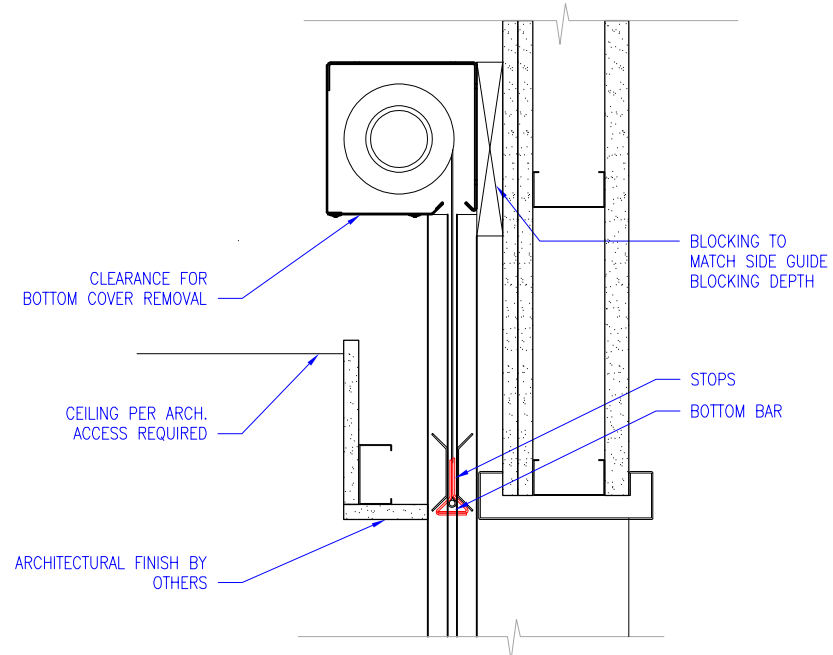
**21-320** HEADBOX - DROPPED CEILING  
SMOKE RATED INSTALL



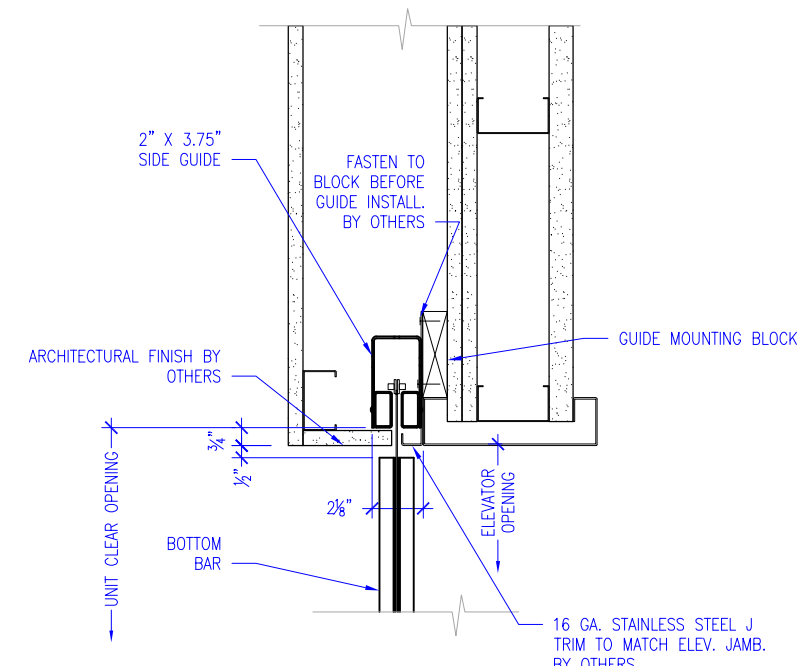
**21-310** HEADBOX - FACE MOUNT AS TESTED  
FIRE RATED INSTALL



**21-520** GUIDE POCKET W/ HDBX CLEARANCE  
SMOKE RATED



**21E-370** HEADBOX - CUSTOM BURIED ELEVATOR INSTALL



**21E-570** GUIDE - CUSTOM BURIED ELEVATOR INSTALL

- M2100 FIRE NOTES:
- SMOKE GUARD FIRE RATED UNITS (HOUSINGS & SIDE GUIDES) TO BE MOUNTED TO A FINISHED, FIRE RATED ASSEMBLY OR STRUCTURE PER YOUR APPLICATION.
  - CLIENT TO PROVIDE CONTINUOUS MOUNTING SURFACE FOR STRUCTURAL AND SHEET METAL ATTACHMENT.
  - TOLERANCE: FLOOR TO CEILING VARIANCE MUST BE WITHIN +/- 1/2" ACROSS LENGTH OF MACHINE..
  - ORDER LENGTHS TO BE AT 1/4" INCREMENTS ONLY.
  - DIMENSIONS TO NOT INCLUDE HEADS OF EXTERNAL FASTENERS.
  - STRUCTURAL DESIGN TO USE LOADS OF 11 LBS/FT
  - STRUCTURAL ATTACHMENT TO BE WITHIN 6" OF EACH END AND MAX OF 36" ON CENTER. (2) SCREWS PER LOCATION, DRILLING REQUIRED ON SITE.

- M2100 SMOKE NOTES:
- SMOKE GUARD SMOKE RATED UNITS (HOUSINGS & SIDE GUIDES) TO BE MOUNTED TO A FINISHED, SMOKE RATED ASSEMBLY OR STRUCTURE PER YOUR APPLICATION.
  - CLIENT TO PROVIDE CONTINUOUS MOUNTING SURFACE FOR STRUCTURAL AND SHEET METAL ATTACHMENT.
  - TOLERANCE: FLOOR TO CEILING VARIANCE MUST BE WITHIN +/- 1/2" ACROSS LENGTH OF MACHINE..
  - ORDER LENGTHS TO BE AT 1/4" INCREMENTS ONLY.
  - DIMENSIONS TO NOT INCLUDE HEADS OF EXTERNAL FASTENERS.
  - STRUCTURAL DESIGN TO USE LOADS OF 11 LBS/FT
  - STRUCTURAL ATTACHMENT TO BE WITHIN 6" OF EACH END AND MAX OF 36" ON CENTER. (2) SCREWS PER LOCATION, DRILLING REQUIRED ON SITE.

REVISION		
REVISION NUMBER	REVISION DATE	REVISION DESCRIPTION
####	####	####
####	####	####
####	####	####
####	####	####

QUOTE: ####  
PROJECT: ####  
DIST: ####

DESIGN SET: ####	SIZE <b>B</b>
MODEL: ####	SHEET ---
SHEET TITLE: M21E-2	
DRAWN: HGK	4.1.2022

**SIGNATURE REQUIRED**

**DATE**

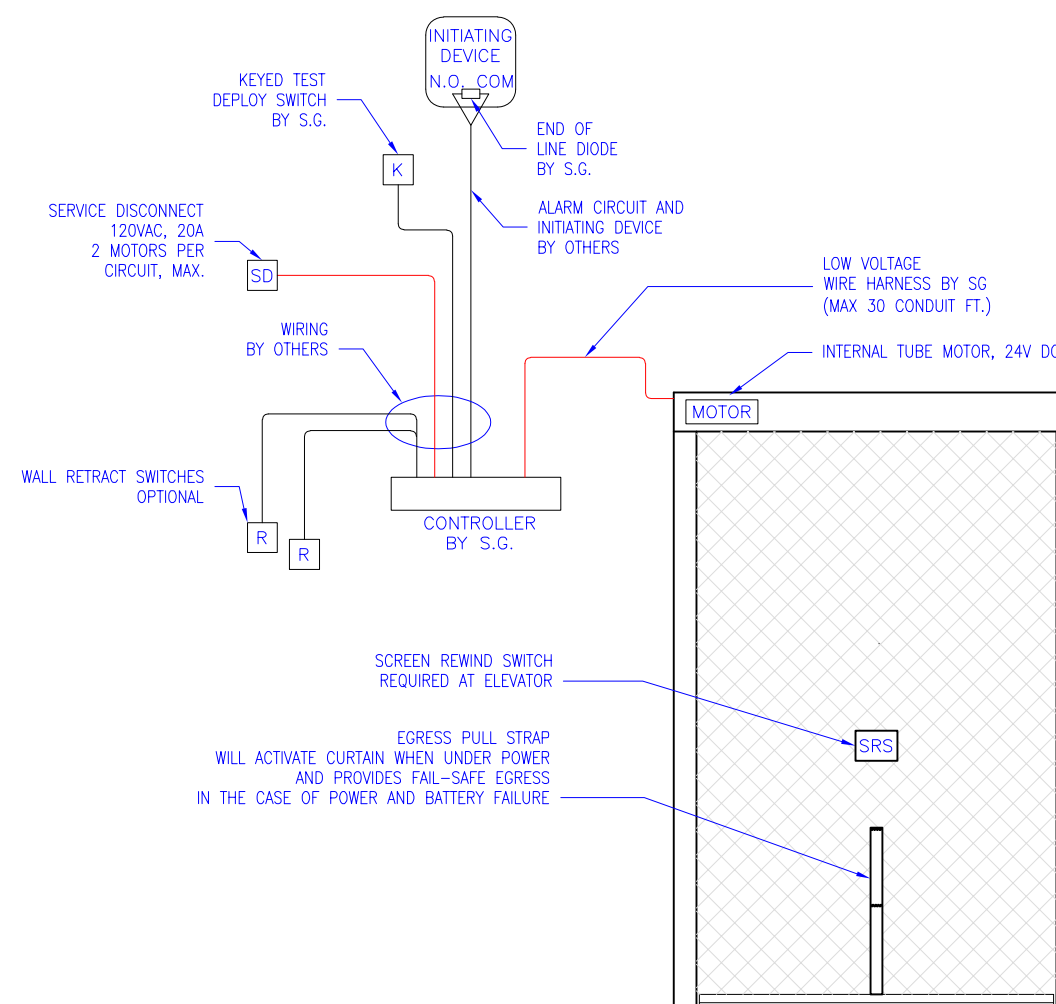
THESE DRAWINGS SHOW OUR INTERPRETATION OF THE PRINCIPAL PLANS AND SPECIFICATIONS. THEY ARE SUBMITTED AS CHECK PRINTS REQUIRING REVIEW AND POSSIBLE REVISIONS TO DETAILS AND/OR DIMENSIONS. BEFORE FABRICATION OF MATERIALS CAN BEGIN, DRAWING PACKAGE MUST MATCH O.P.M. ORDER AND BE RETURNED SIGNED AND DATED. IF THERE ARE SIZE DISCREPANCIES BETWEEN THIS DRAWING PACKAGE AND O.P.M. ORDER, THESE DRAWING SUPERCEDE O.P.M. DIMENSIONS. IF CONSIDERABLY DIFFERENT, A RE-SUBMITTAL OF O.P.M. ORDER WILL BE REQUIRED. THIS SIGNATURE INDICATES PURCHASER'S FULL ACCEPTANCE OF DETAILS SHOWN AND THE PRODUCT IN CONFORMANCE TO SAME. THESE DESIGNS AND DRAWINGS ARE THE EXCLUSIVE PROPERTY OF SMOKE GUARD, INC. AND ARE NOT TO BE USED OR DUPLICATED WITHOUT PERMISSIONS.



287 N. Maple Grove  
Boise, ID 83704  
800.574.0330  
www.smokeguard.com

- M2100 FIRE NOTES:
- SMOKE GUARD FIRE RATED UNITS (HOUSINGS & SIDE GUIDES) TO BE MOUNTED TO A FINISHED, FIRE RATED ASSEMBLY OR STRUCTURE PER YOUR APPLICATION.
  - CLIENT TO PROVIDE CONTINUOUS MOUNTING SURFACE FOR STRUCTURAL AND SHEET METAL ATTACHMENT.
  - TOLERANCE: FLOOR TO CEILING VARIANCE MUST BE WITHIN +/- 1/2" ACROSS LENGTH OF MACHINE..
  - ORDER LENGTHS TO BE AT 1/4" INCREMENTS ONLY.
  - DIMENSIONS TO NOT INCLUDE HEADS OF EXTERNAL FASTENERS.
  - STRUCTURAL DESIGN TO USE LOADS OF 11 LBS/FT
  - STRUCTURAL ATTACHMENT TO BE WITHIN 6" OF EACH END AND MAX OF 36" ON CENTER. (2) SCREWS PER LOCATION, DRILLING REQUIRED ON SITE.

- M2100 SMOKE NOTES:
- SMOKE GUARD SMOKE RATED UNITS (HOUSINGS & SIDE GUIDES) TO BE MOUNTED TO A FINISHED, SMOKE RATED ASSEMBLY OR STRUCTURE PER YOUR APPLICATION.
  - CLIENT TO PROVIDE CONTINUOUS MOUNTING SURFACE FOR STRUCTURAL AND SHEET METAL ATTACHMENT.
  - TOLERANCE: FLOOR TO CEILING VARIANCE MUST BE WITHIN +/- 1/2" ACROSS LENGTH OF MACHINE..
  - ORDER LENGTHS TO BE AT 1/4" INCREMENTS ONLY.
  - DIMENSIONS TO NOT INCLUDE HEADS OF EXTERNAL FASTENERS.
  - STRUCTURAL DESIGN TO USE LOADS OF 11 LBS/FT
  - STRUCTURAL ATTACHMENT TO BE WITHIN 6" OF EACH END AND MAX OF 36" ON CENTER. (2) SCREWS PER LOCATION, DRILLING REQUIRED ON SITE.



1 M2100E ELECTRICAL SCHEMATIC  
SCALE: 3/8" = 1'-0"

THESE DRAWINGS SHOW OUR INTERPRETATION OF THE PRINCIPAL PLANS AND SPECIFICATIONS. THEY ARE SUBMITTED AS CHECK PRINTS REQUIRING REVIEW AND POSSIBLE REVISIONS TO DETAILS AND/OR DIMENSIONS. BEFORE FABRICATION OF MATERIALS CAN BEGIN, DRAWING PACKAGE MUST MATCH O.P.M. ORDER AND BE RETURNED SIGNED AND DATED. IF THERE ARE SIZE DISCREPANCIES BETWEEN THIS DRAWING PACKAGE AND O.P.M. ORDER, THESE DRAWING SUPERCEDE O.P.M. DIMENSIONS. IF CONSIDERABLY DIFFERENT, A RE-SUBMITTAL OF O.P.M. ORDER WILL BE REQUIRED. THIS SIGNATURE INDICATES PURCHASER'S FULL ACCEPTANCE OF DETAILS SHOWN AND THE PRODUCT IN CONFORMANCE TO SAME. THESE DESIGNS AND DRAWINGS ARE THE EXCLUSIVE PROPERTY OF SMOKE GUARD, INC. AND ARE NOT TO BE USED OR DUPLICATED WITHOUT PERMISSIONS.

**SIGNATURE REQUIRED**

**DATE**

REVISION		
REVISION NUMBER	REVISION DATE	REVISION DESCRIPTION
###	###	###
###	###	###
###	###	###
###	###	###

QUOTE: ###

PROJECT: ###

DIST: ###

DESIGN SET: ###

MODEL: ###

SHEET TITLE:  
M21E-ELEC

DRAWN: HGK 4.1.2022

SIZE  
**B**

SHEET  
---