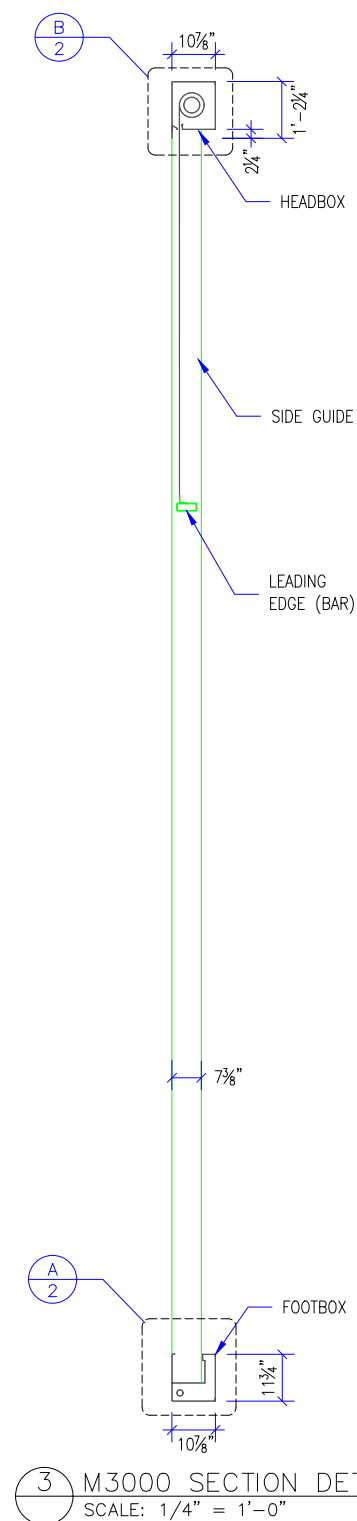
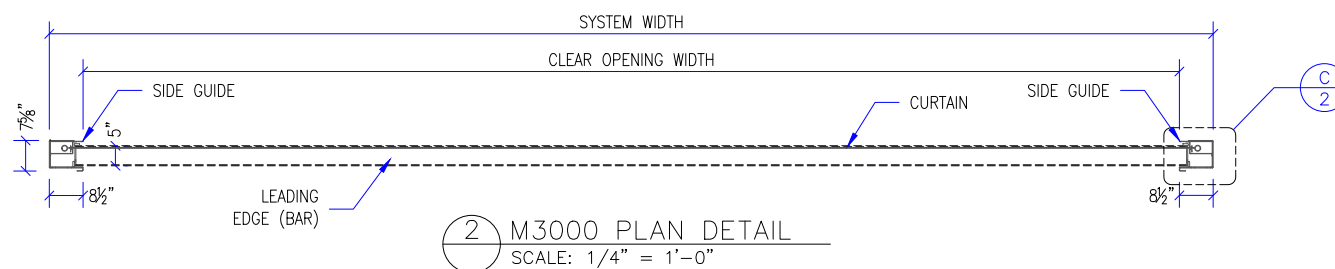
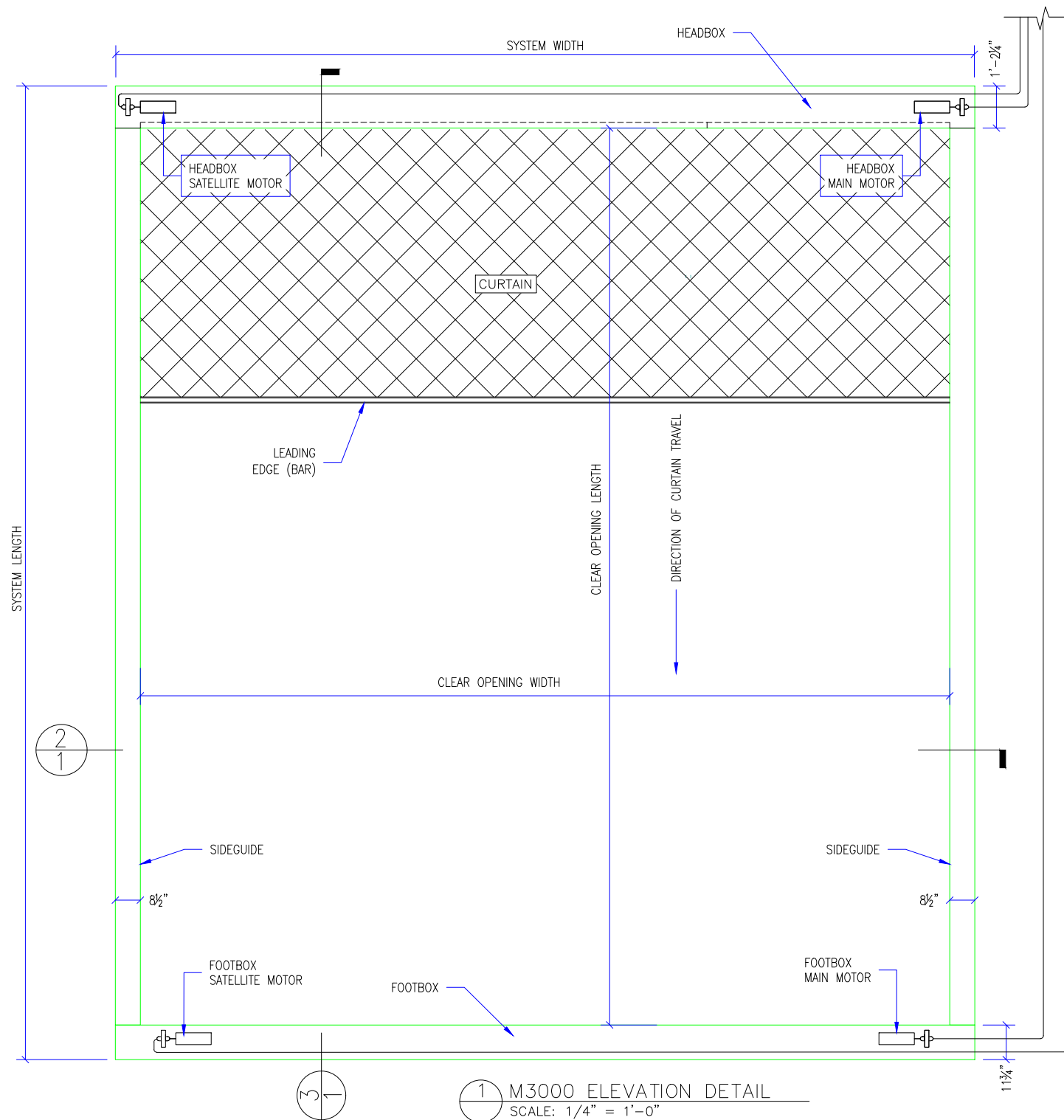


- M3000 FIRE NOTES:
- SMOKE GUARD FIRE RATED UNITS (HOUSINGS & SIDE GUIDES) TO BE MOUNTED TO A FINISHED, FIRE RATED ASSEMBLY OR STRUCTURE PER YOUR APPLICATION.
 - CLIENT TO PROVIDE CONTINUOUS MOUNTING SURFACE FOR STRUCTURAL AND SHEET METAL ATTACHMENT.
 - TOLERANCE: FLOOR TO CEILING VARIANCE MUST BE WITHIN +/- 1/2" ACROSS LENGTH OF MACHINE.
 - ORDER LENGTHS TO BE AT 1/4" INCREMENTS ONLY.
 - DIMENSIONS TO NOT INCLUDE HEADS OF EXTERNAL FASTENERS.
 - STATIC LOADS
 - HEADBOX: 40 LBS/FT.
 - FOOTBOX: 40 LBS/FT.
 - GUIDES: 15 LBS/FT.
 - CONTROLLER CONDUIT BY OTHERS
 - CONTROLLER CABLE PROVIDED
 - PROVIDE ACCESS TO CONTROLLER

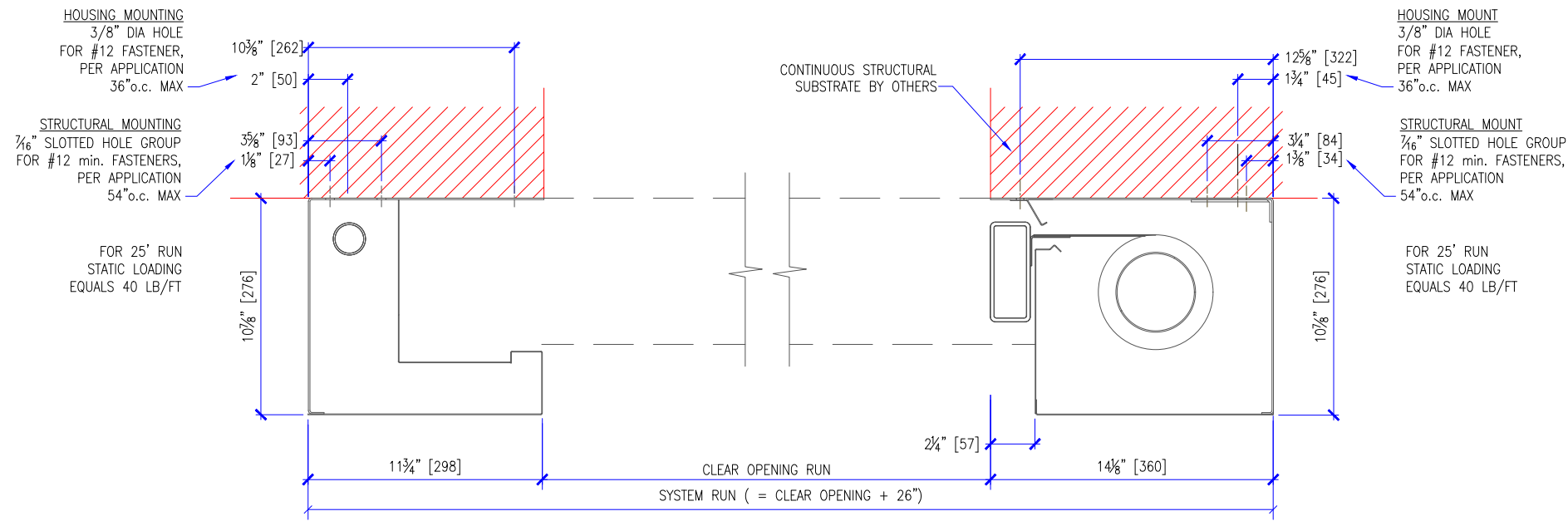


REVISION		
REVISION NUMBER	REVISION DATE	REVISION DESCRIPTION
D1	7.28.20	INITIAL RELEASE

QUOTE: ---
CONFIGURATION: ---
PROJECT: ---
DIST.: ---

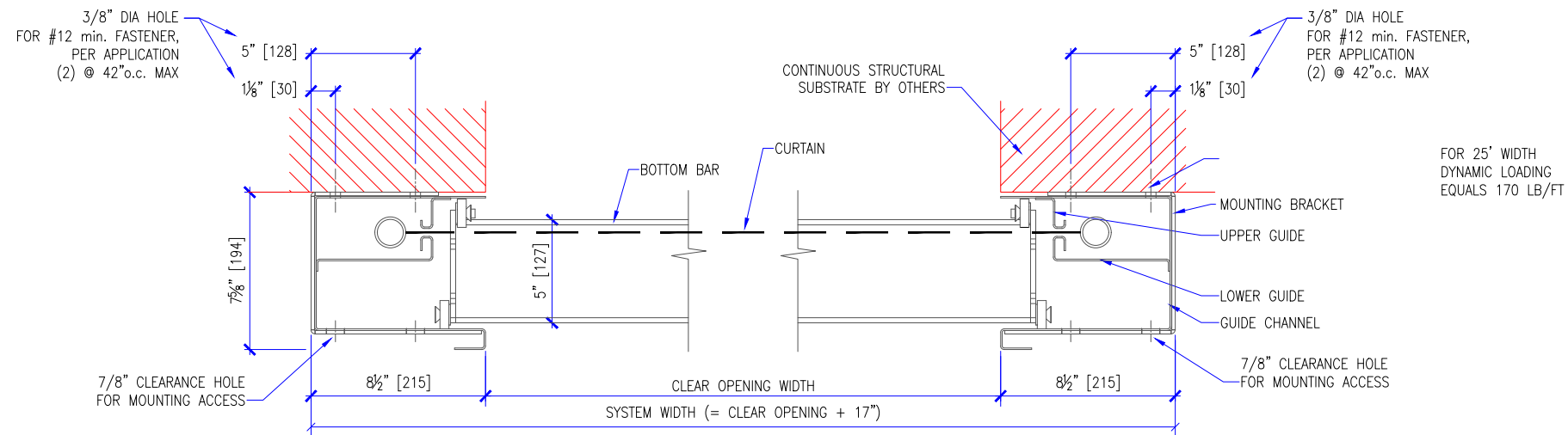
DESIGN SET: D1	SIZE B
MODEL: M3000	SHEET 1 OF 5
SHEET TITLE: M3000 ELEVATION, PLAN, & SECTION DETAILS	
DRAWN: TLM	7.28.2020

- M3000 FIRE NOTES:
- SMOKE GUARD FIRE RATED UNITS (HOUSINGS & SIDE GUIDES) TO BE MOUNTED TO A FINISHED, FIRE RATED ASSEMBLY OR STRUCTURE PER YOUR APPLICATION.
 - CLIENT TO PROVIDE CONTINUOUS MOUNTING SURFACE FOR STRUCTURAL AND SHEET METAL ATTACHMENT.
 - TOLERANCE: FLOOR TO CEILING VARIANCE MUST BE WITHIN +/- 1/2" ACROSS LENGTH OF MACHINE.
 - ORDER LENGTHS TO BE AT 1/4" INCREMENTS ONLY.
 - DIMENSIONS TO NOT INCLUDE HEADS OF EXTERNAL FASTENERS.
 - STATIC LOADS
 - HEADBOX: 40 LBS/FT.
 - FOOTBOX: 40 LBS/FT.
 - GUIDES: 15 LBS/FT.
 - CONTROLLER CONDUIT BY OTHERS
 - CONTROLLER CABLE PROVIDED
 - PROVIDE ACCESS TO CONTROLLER



(A) M3000 TYPICAL FOOTBOX DETAILS
SCALE: 1 1/2" = 1'-0"

(B) M3000 TYPICAL HEADBOX DETAILS
SCALE: 1 1/2" = 1'-0"



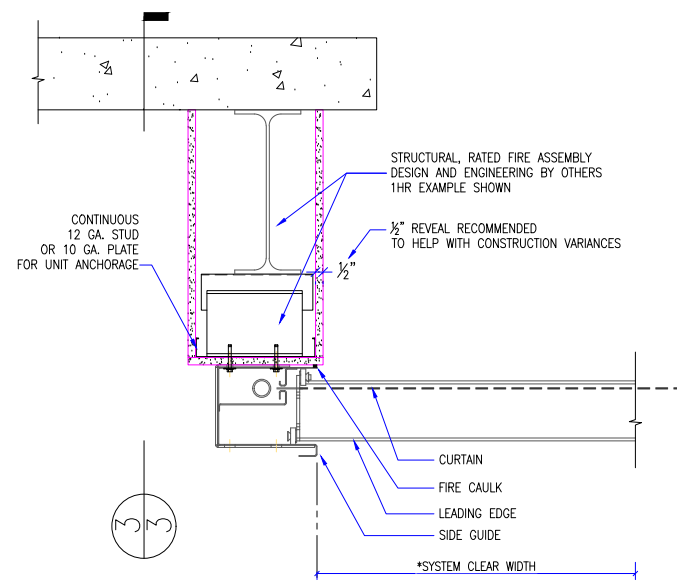
(C) M3000 TYPICAL SIDEGUIDE DETAILS
SCALE: 1 1/2" = 1'-0"

REVISION		
REVISION NUMBER	REVISION DATE	REVISION DESCRIPTION
D1	7.28.20	INITIAL RELEASE

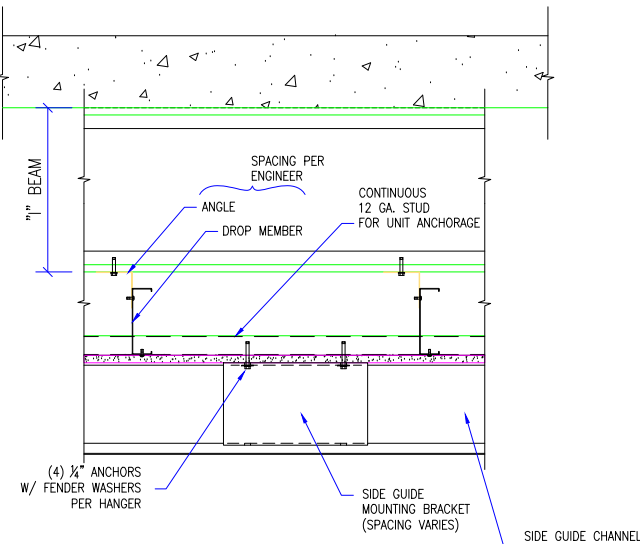
QUOTE: ----
CONFIGURATION:
PROJECT: ----
DIST.: ----

DESIGN SET: D1	SIZE B
MODEL: M3000	SHEET
SHEET TITLE: M3000 TYP. DETAILS	2 OF 5
DRAWN: TLM	7.28.2020

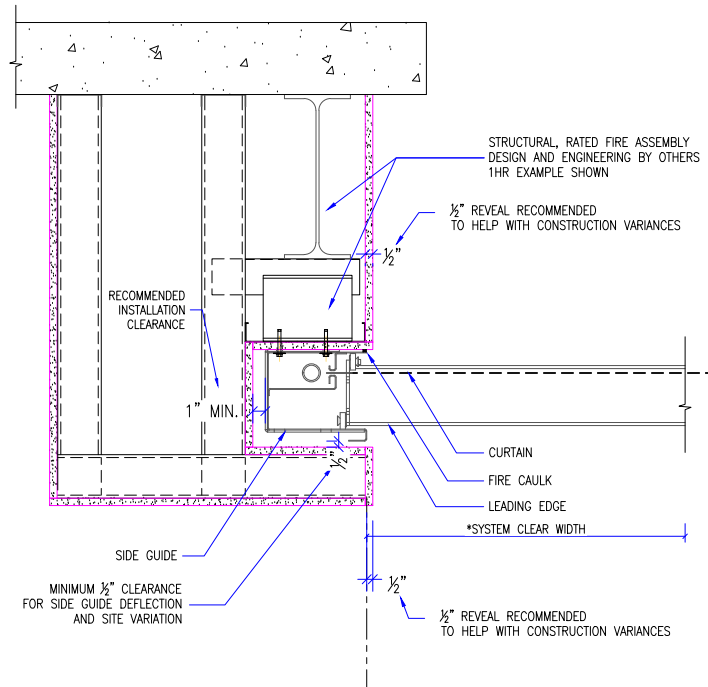
- M3000 FIRE NOTES:
- SMOKE GUARD FIRE RATED UNITS (HOUSINGS & SIDE GUIDES) TO BE MOUNTED TO A FINISHED, FIRE RATED ASSEMBLY OR STRUCTURE PER YOUR APPLICATION.
 - CLIENT TO PROVIDE CONTINUOUS MOUNTING SURFACE FOR STRUCTURAL AND SHEET METAL ATTACHMENT.
 - TOLERANCE: FLOOR TO CEILING VARIANCE MUST BE WITHIN $\pm 1/2$ " ACROSS LENGTH OF MACHINE.
 - ORDER LENGTHS TO BE AT $1/4$ " INCREMENTS ONLY.
 - DIMENSIONS TO NOT INCLUDE HEADS OF EXTERNAL FASTENERS.
 - STATIC LOADS
 - HEADBOX: 40 LBS/FT.
 - FOOTBOX: 40 LBS/FT.
 - GUIDES: 15 LBS/FT.
 - CONTROLLER CONDUIT BY OTHERS
 - CONTROLLER CABLE PROVIDED
 - PROVIDE ACCESS TO CONTROLLER



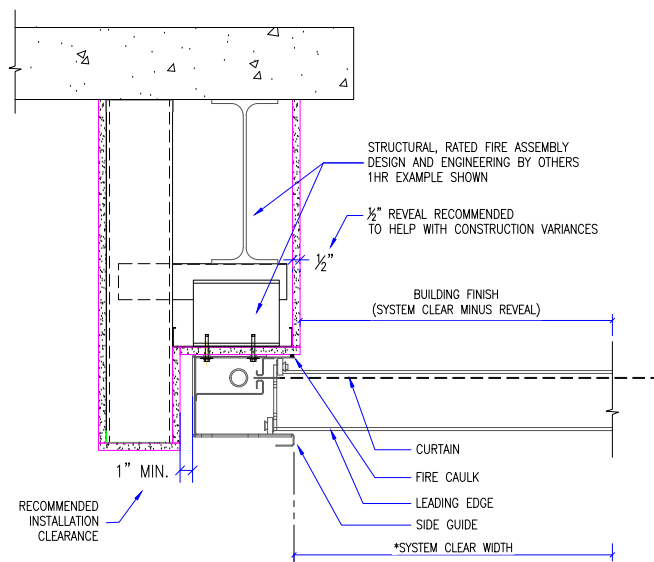
1 M3000-MINIMUM DROP RATER HEADER @ SIDE GUIDES
SCALE: 3/4" = 1'-0"



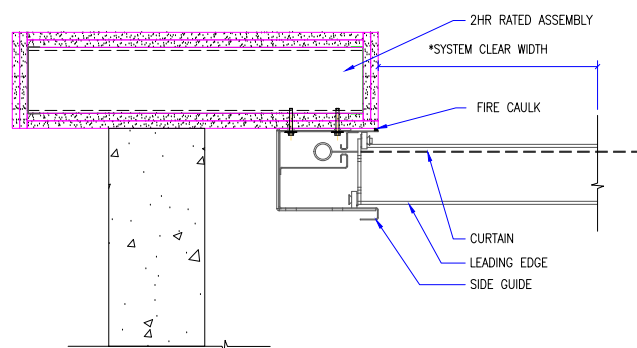
3 M3000-STRUCTURAL MOUNTING
SCALE: 3/4" = 1'-0"



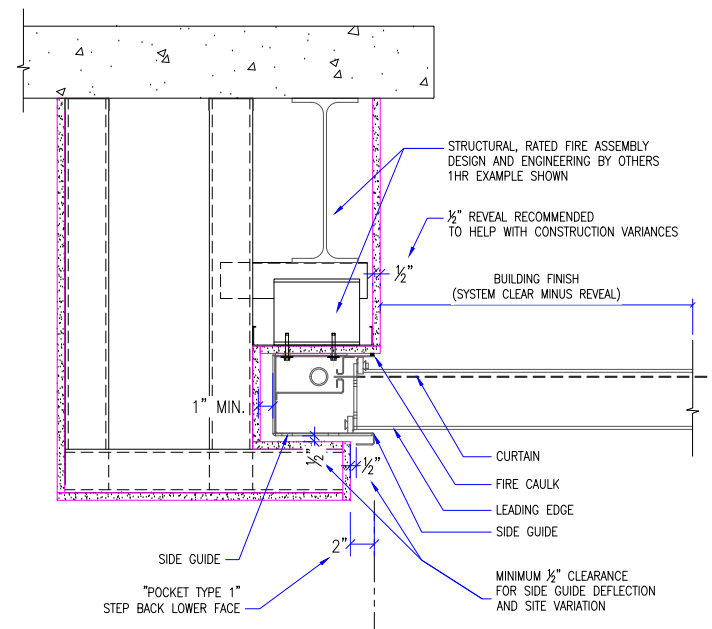
5 M3000-DROP RATED HEADER POCKET-2 @SIDE GUIDE
SCALE: 3/4" = 1'-0"



2 M3000-DROP RATER NOTCH HEADER @SIDE GUIDE
SCALE: 3/4" = 1'-0"



4 M3000-SYSTEM AS TESTED-HEAD & FOOTBOX SIM.
SCALE: 3/4" = 1'-0"



6 M3000-DROP RATED HEADER POCKET-1 @ SIDE GUIDE
SCALE: 3/4" = 1'-0"

REVISION

REVISION NUMBER	REVISION DATE	REVISION DESCRIPTION
D1	7.28.20	INITIAL RELEASE

QUOTE: ---
CONFIGURATION:
PROJECT: ---
DIST.: ---

DESIGN SET: D1

MODEL: M3000

SHEET TITLE:
M3000-1 SIDE GUIDES

DRAWN: TLM 7.28.2020 3 OF 5

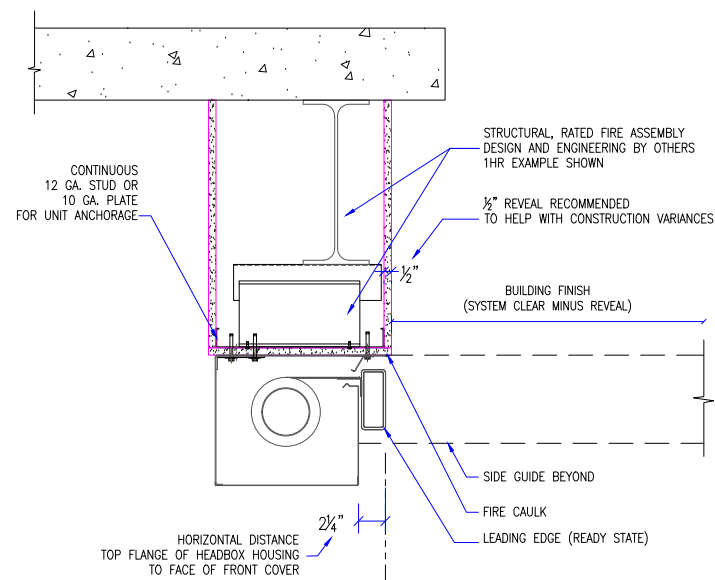
SIZE

B

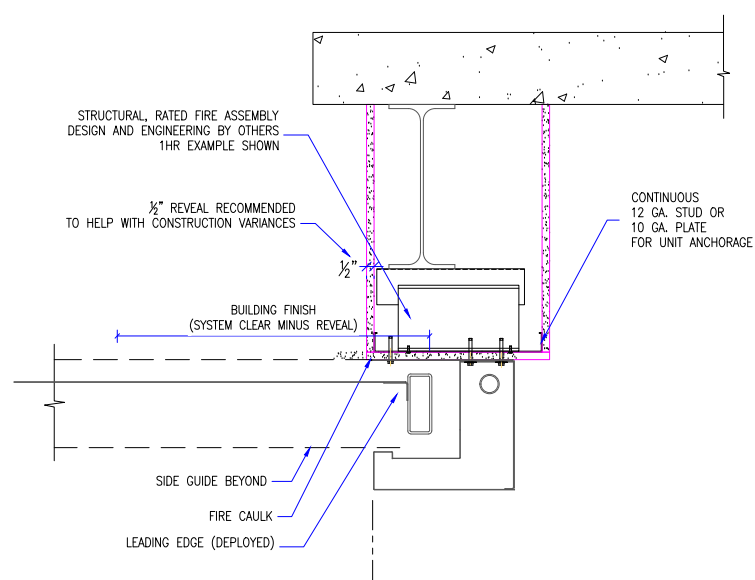
SHEET

3 OF 5

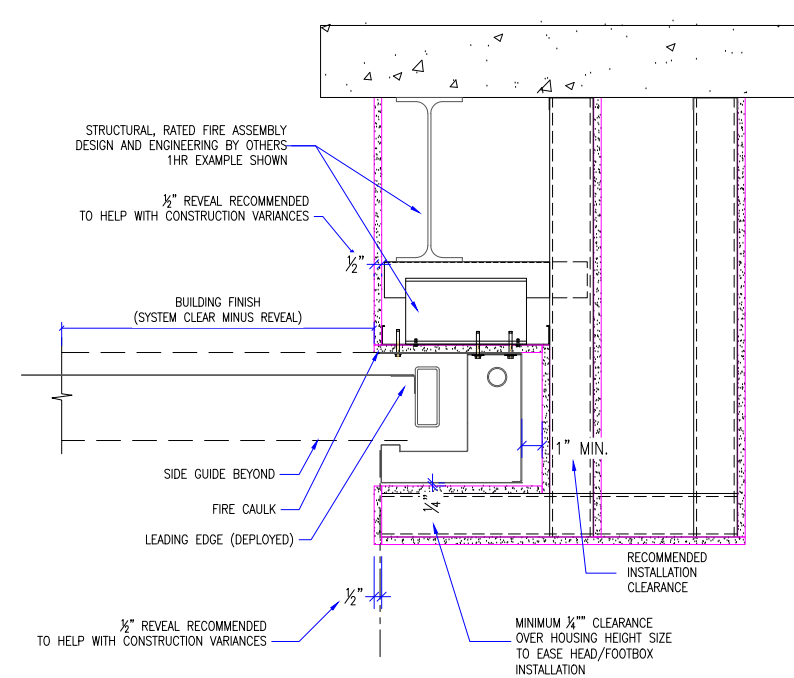
- M3000 FIRE NOTES:
- SMOKE GUARD FIRE RATED UNITS (HOUSINGS & SIDE GUIDES) TO BE MOUNTED TO A FINISHED, FIRE RATED ASSEMBLY OR STRUCTURE PER YOUR APPLICATION. CLIENT TO PROVIDE CONTINUOUS MOUNTING SURFACE FOR STRUCTURAL AND SHEET METAL ATTACHMENT.
 - TOLERANCE: FLOOR TO CEILING VARIANCE MUST BE WITHIN +/- 1/2" ACROSS LENGTH OF MACHINE.
 - ORDER LENGTHS TO BE AT 1/4" INCREMENTS ONLY.
 - DIMENSIONS TO NOT INCLUDE HEADS OF EXTERNAL FASTENERS.
 - STATIC LOADS
 - HEADBOX: 40 LBS/FT.
 - FOOTBOX: 40 LBS/FT.
 - GUIDES: 15 LBS/FT.
 - CONTROLLER CONDUIT BY OTHERS
 - CONTROLLER CABLE PROVIDED
 - PROVIDE ACCESS TO CONTROLLER



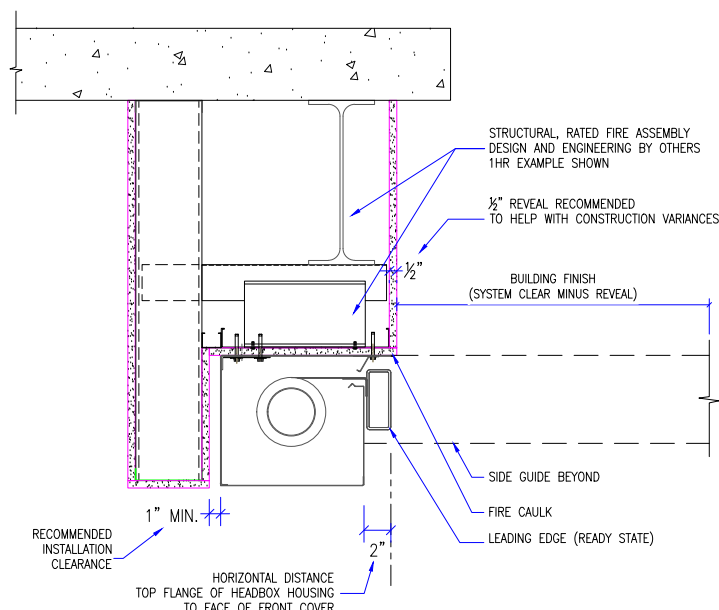
1 M3000-DROP RATED
HEADER @ HEADBOX
SCALE: 3/4" = 1'-0"



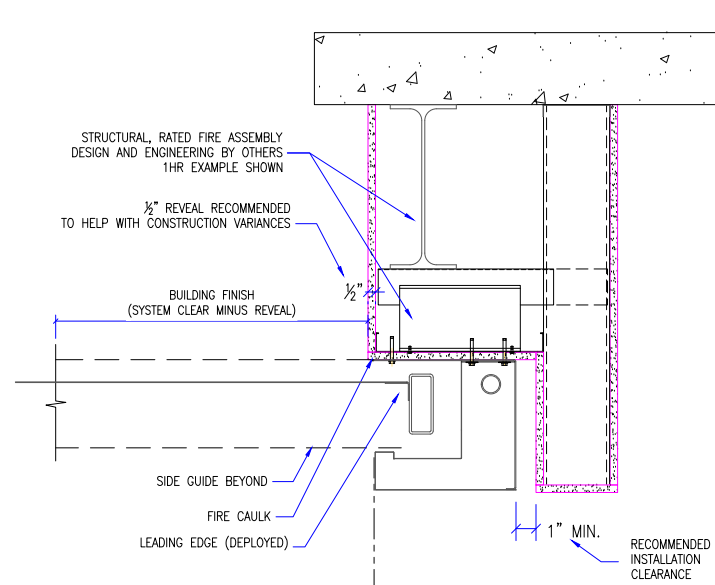
3 M3000-DROP RATED
HEADER @ FOOTBOX
SCALE: 3/4" = 1'-0"



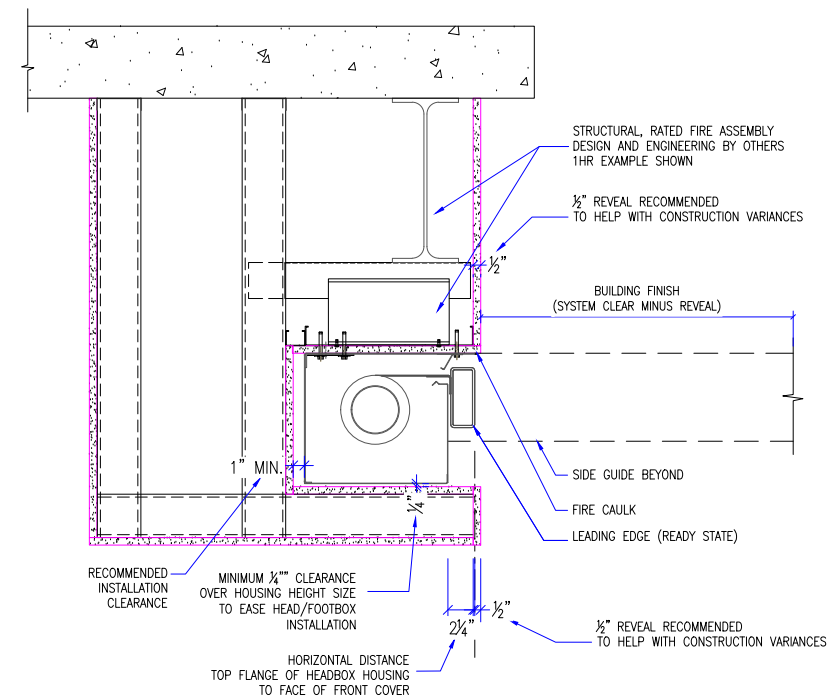
5 M3000-DROP RATED NOTCH
HEADER @ FOOTBOX
SCALE: 3/4" = 1'-0"



2 M3000-DROP RATED NOTCH
HEADER @ HEADBOX
SCALE: 3/4" = 1'-0"



4 M3000-DROP RATED
HEADER @ FOOTBOX
SCALE: 3/4" = 1'-0"



6 M3000-DROP RATED NOTCH
HEADER @ HEADBOX
SCALE: 3/4" = 1'-0"

REVISION

REVISION NUMBER	REVISION DATE	REVISION DESCRIPTION
D1	7.28.20	INITIAL RELEASE

QUOTE: ---
CONFIGURATION:
PROJECT: ---
DIST.: ---

DESIGN SET: D1

MODEL: M3000

SHEET TITLE:
M3000- HEADBOX & FOOTBOX

DRAWN: TLM 7.28.2020 4 OF 5

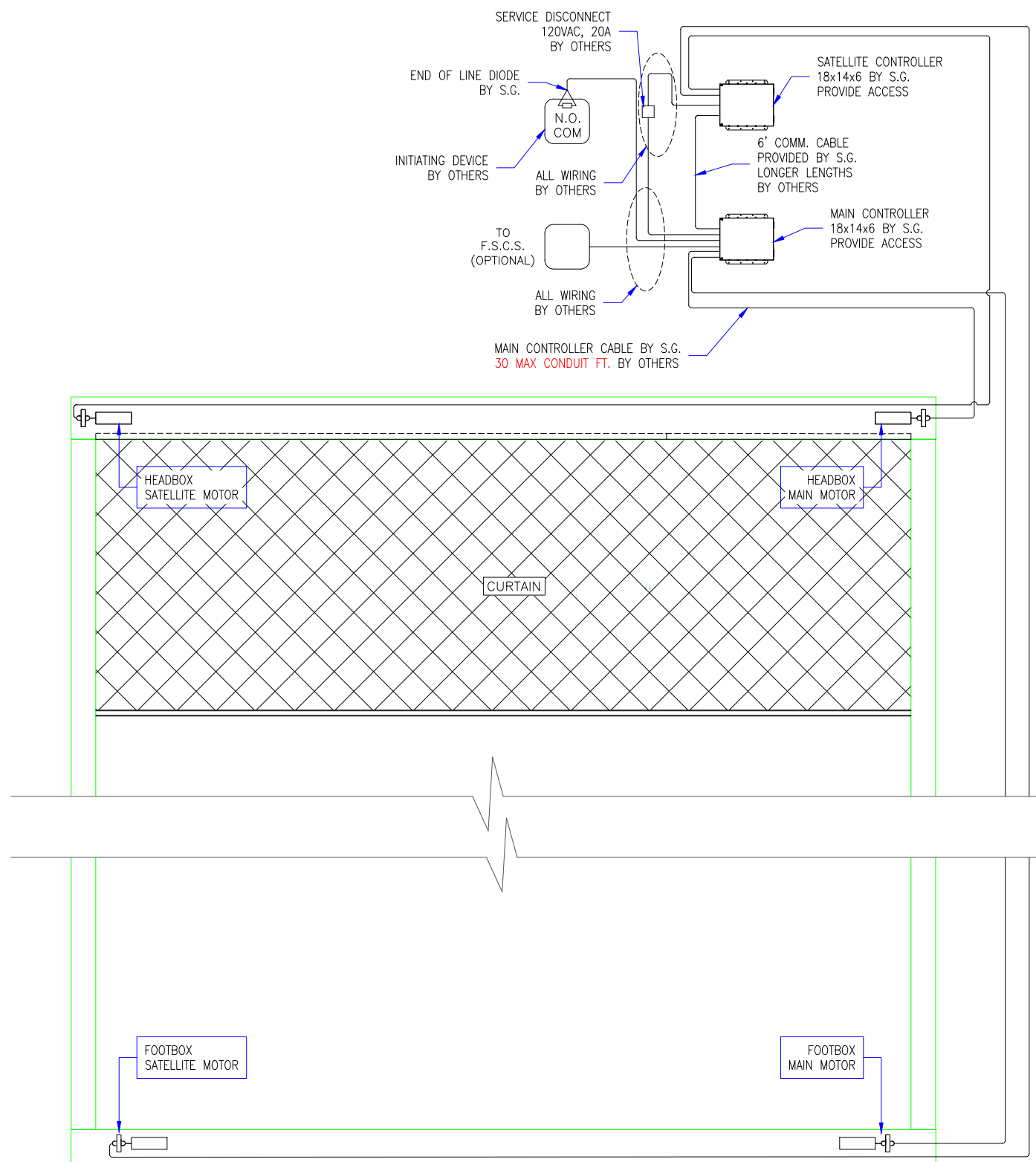
SIZE

B

SHEET

4 OF 5

- M3000 ELECTRICAL NOTES:
1. CONTROLLER CONDUIT BY OTHERS
 2. CONTROLLER CABLE PROVIDED
 3. MAX 30 CONDUIT FEET FROM MAIN CONTROLLER TO HOUSING
 4. INTERNAL MOTORS ARE ACCESSIBLE THROUGH HOUSING OPENING WHEN UNIT IS DEPLOYED.



1 M3000 ELECTRICAL DETAILS
SCALE: 1/4" = 1'-0"

REVISION

REVISION NUMBER	REVISION DATE	REVISION DESCRIPTION
D1	7.28.20	INITIAL RELEASE

QUOTE: ----
CONFIGURATION:
PROJECT: ----
DIST.: ----

DESIGN SET: D1

MODEL: M3000

SHEET TITLE:
M3000 ELECTRICAL DETAILS

DRAWN: TLM 7.28.2020 5 OF 5

SIZE

B

SHEET

5 OF 5