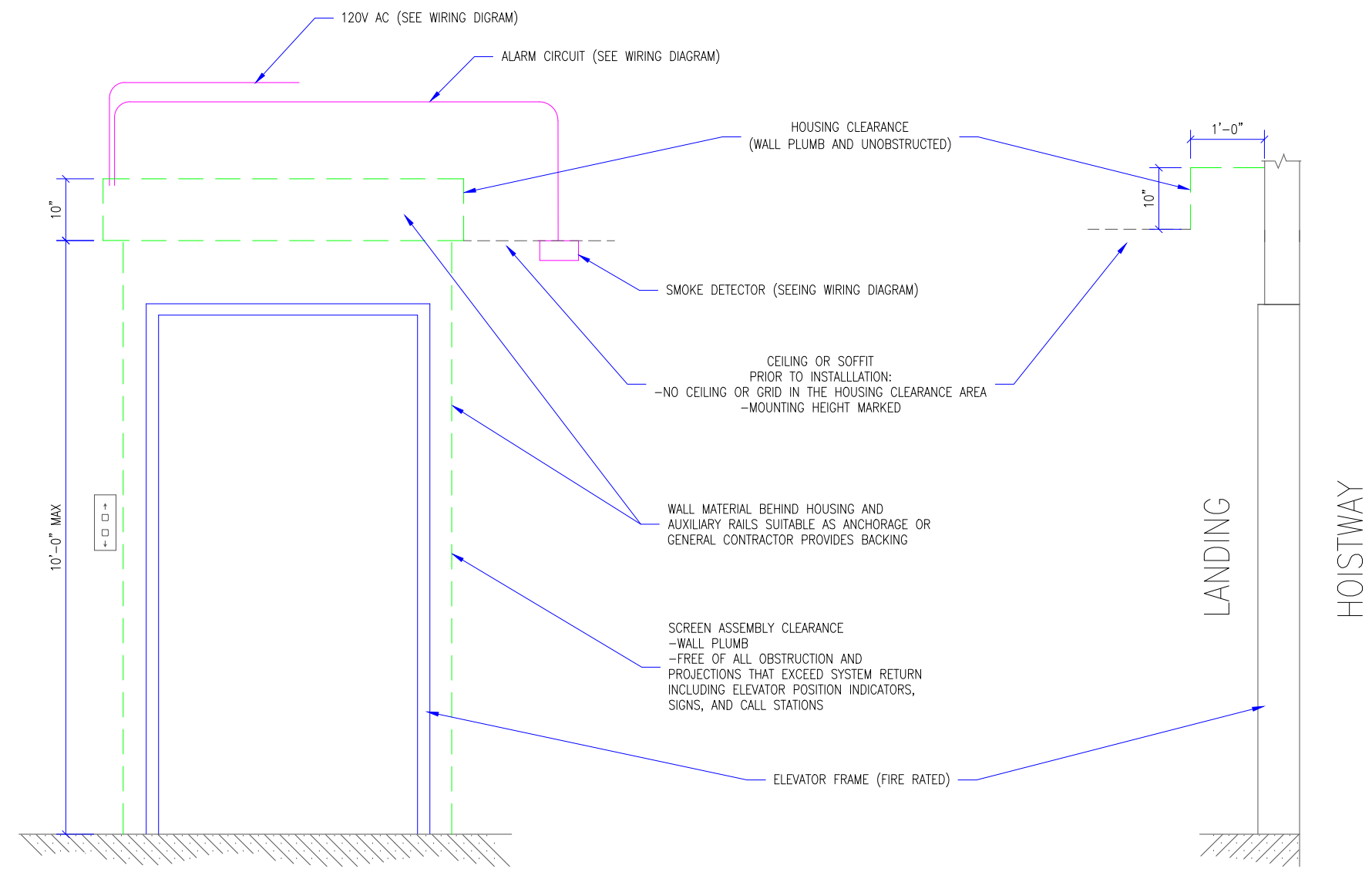


- M600 GENERAL NOTES:
1. CLIENT TO PROVIDE CONTINUOUS MOUNTING SURFACE FOR STRUCTURAL AND SHEET METAL ATTACHMENT.
  2. ORDER LENGTHS TO BE AT 1/4" INCREMENTS ONLY.
  3. DIMENSIONS DO NOT INCLUDE HEADS OF EXTERNAL FASTENERS.
  4. SMOKE RATING FOR ENCLOSURE ABOVE HOUSING DESIGNED BY OTHERS.
  5. INTERNAL MOTORS ARE ACCESSIBLE THROUGH HOUSING OPENING WHEN UNIT IS DEPLOYED.



LANDING ELEVATION

SECTION

1 M600 ELEVATION DETAILS  
SCALE: 1/2" = 1'-0"

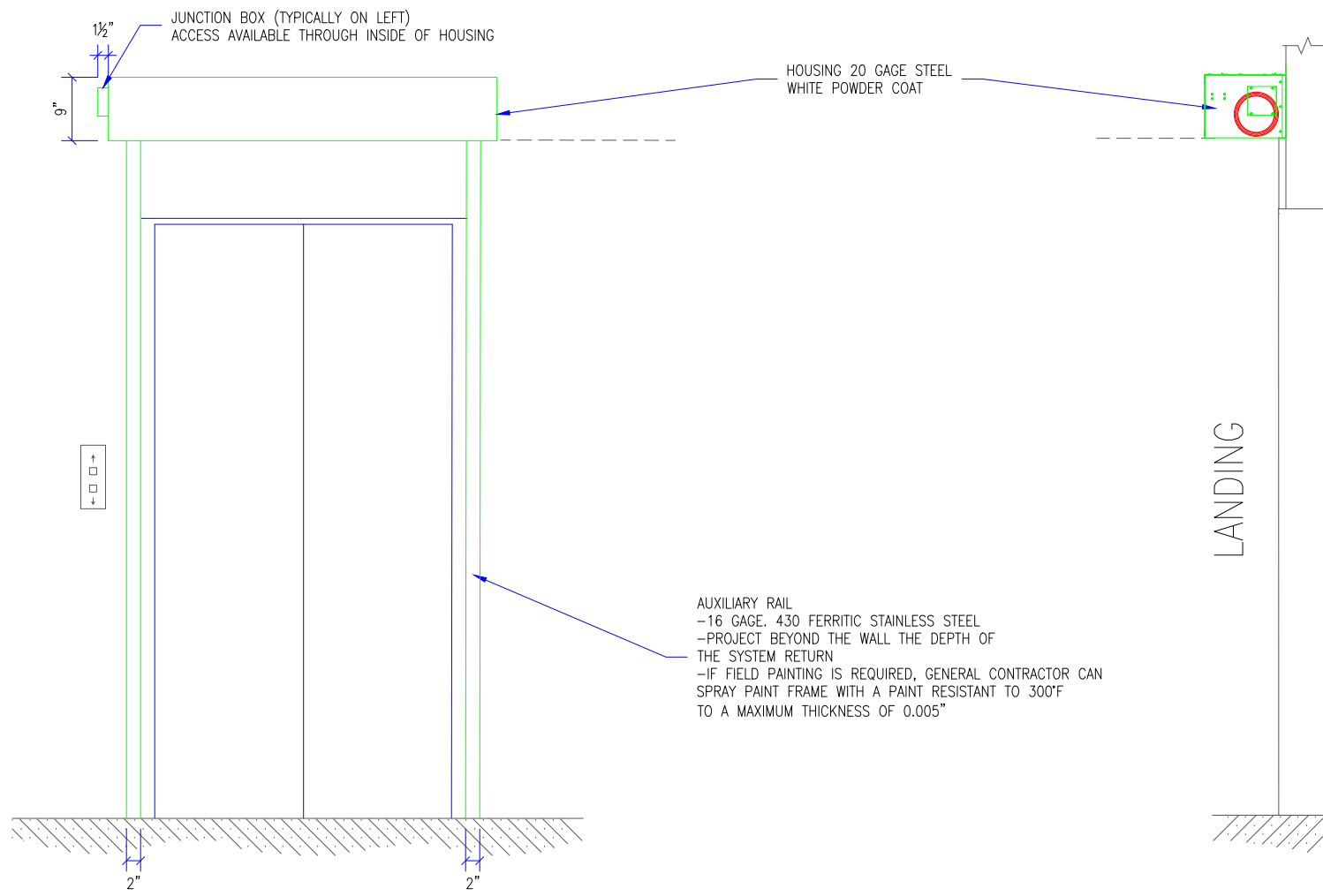
| REVISION        |               |                      |
|-----------------|---------------|----------------------|
| REVISION NUMBER | REVISION DATE | REVISION DESCRIPTION |
| D1              | 9.16.20       | INITIAL RELEASE      |
| ---             | ---           | ---                  |
|                 |               |                      |
|                 |               |                      |

QUOTE: ----  
CONFIGURATION: ----  
PROJECT: ----  
DIST.: ----

|  |                  |
|--|------------------|
| DESIGN SET: D1                         | SIZE<br><b>B</b> |
| MODEL: M600                            | SHEET            |
| SHEET TITLE:<br>M600 ELEVATION DETAILS | 1 OF 4           |
| DRAWN: TLM                             | 9.16.2020        |

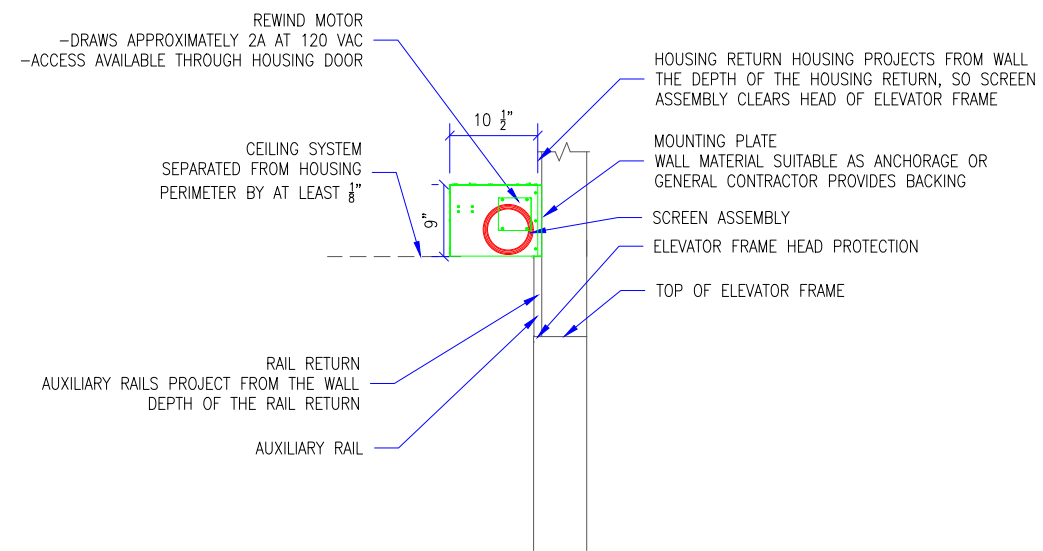
THESE DRAWINGS SHOW OUR INTERPRETATION OF THE PRINCIPAL PLANS AND SPECIFICATIONS. THEY ARE SUBMITTED AS CHECK PRINTS REQUIRING REVIEW AND POSSIBLE REVISIONS TO DETAILS AND/OR DIMENSIONS. BEFORE FABRICATION OF MATERIALS CAN BEGIN, DRAWING PACKAGE MUST MATCH O.P.M. ORDER AND BE RETURNED SIGNED AND DATED. IF THERE ARE SIZE DISCREPANCIES BETWEEN THIS DRAWING PACKAGE AND O.P.M. ORDER, THESE DRAWING SUPERCEDE O.P.M. DIMENSIONS. IF CONSIDERABLY DIFFERENT, A RE-SUBMITTAL OF O.P.M. ORDER WILL BE REQUIRED. THIS SIGNATURE INDICATES PURCHASER'S FULL ACCEPTANCE OF DETAILS SHOWN AND THE PRODUCT IN CONFORMANCE TO SAME. THESE DESIGNS AND DRAWINGS ARE THE EXCLUSIVE PROPERTY OF SMOKE GUARD, INC. AND ARE NOT TO BE USED OR DUPLICATED WITHOUT PERMISSIONS.

- M600 GENERAL NOTES:
1. CLIENT TO PROVIDE CONTINUOUS MOUNTING SURFACE FOR STRUCTURAL AND SHEET METAL ATTACHMENT.
  2. ORDER LENGTHS TO BE AT 1/4" INCREMENTS ONLY.
  3. DIMENSIONS DO NOT INCLUDE HEADS OF EXTERNAL FASTENERS.
  4. SMOKE RATING FOR ENCLOSURE ABOVE HOUSING DESIGNED BY OTHERS.
  5. INTERNAL MOTORS ARE ACCESSIBLE THROUGH HOUSING OPENING WHEN UNIT IS DEPLOYED.

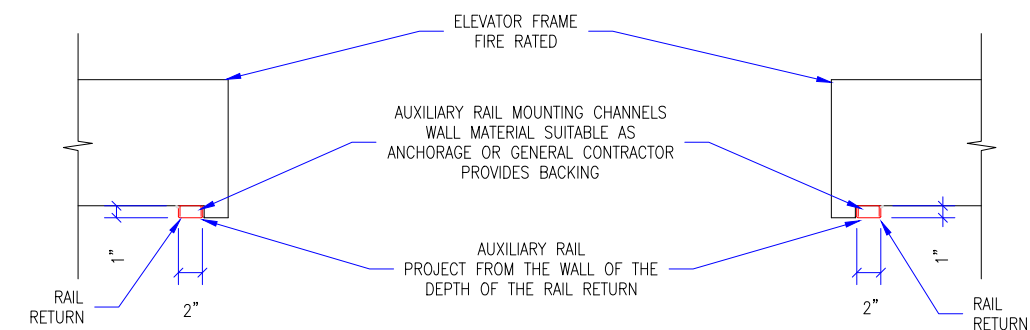


1 M600 READY STATE DETAILS  
SCALE: 1/2" = 1'-0"

| M600 WEIGHTS |                 |
|--------------|-----------------|
| LENGTH (IN)  | MAX WEIGHT (LB) |
| 55           | 80              |
| 65           | 90              |
| 73           | 98              |
| 85           | 110             |
| 109          | 140             |



2 M600 HEADBOX DETAIL  
SCALE: 1/2" = 1'-0"



3 M600 SIDE GUIDE DETAILS  
SCALE: 3/4" = 1'-0"

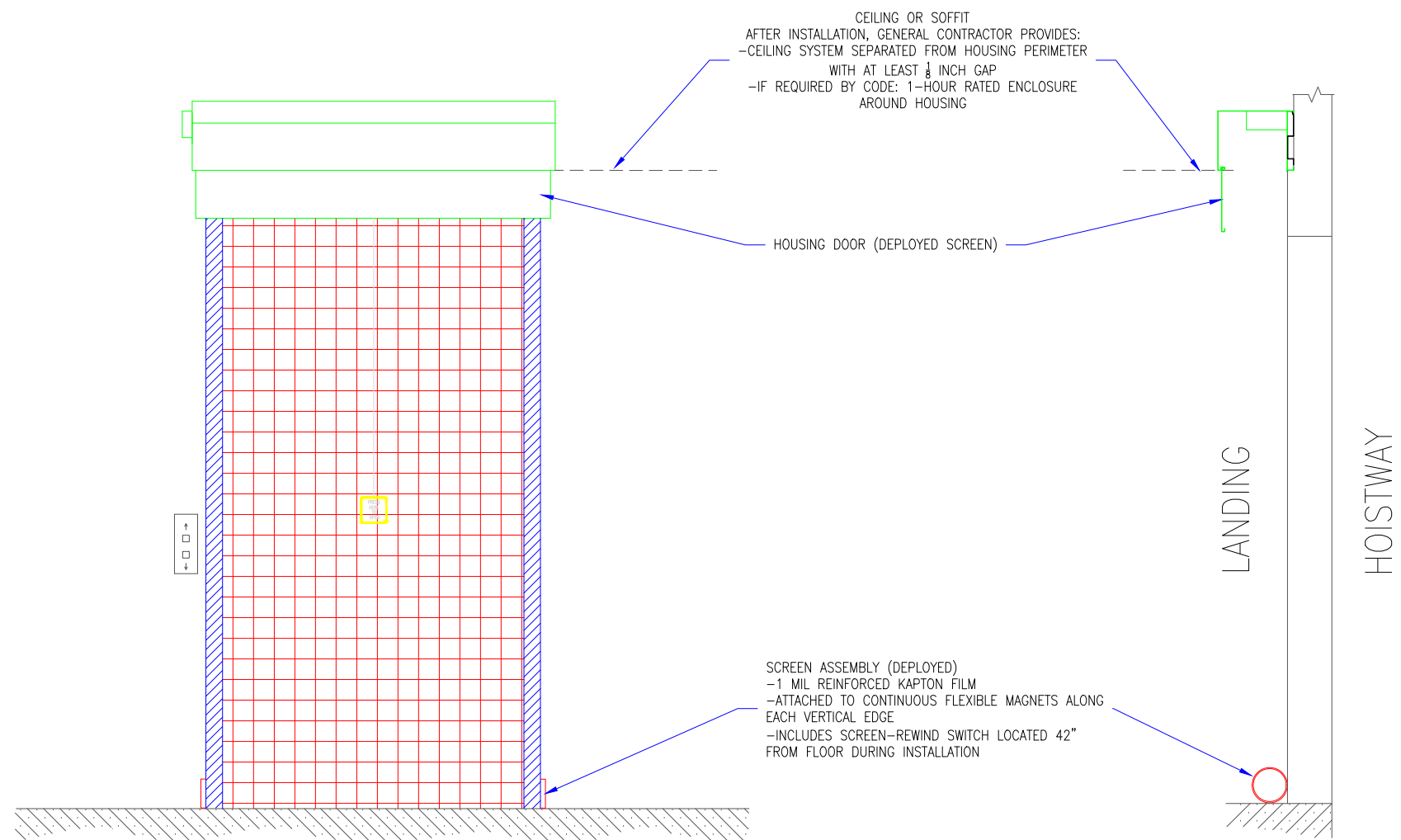
THESE DRAWINGS SHOW OUR INTERPRETATION OF THE PRINCIPAL PLANS AND SPECIFICATIONS. THEY ARE SUBMITTED AS CHECK PRINTS REQUIRING REVIEW AND POSSIBLE REVISIONS TO DETAILS AND/OR DIMENSIONS. BEFORE FABRICATION OF MATERIALS CAN BEGIN, DRAWING PACKAGE MUST MATCH O.P.M. ORDER AND BE RETURNED SIGNED AND DATED. IF THERE ARE SIZE DISCREPANCIES BETWEEN THIS DRAWING PACKAGE AND O.P.M. ORDER, THESE DRAWING SUPERCEDE O.P.M. DIMENSIONS. IF CONSIDERABLY DIFFERENT, A RE-SUBMITTAL OF O.P.M. ORDER WILL BE REQUIRED. THIS SIGNATURE INDICATES PURCHASER'S FULL ACCEPTANCE OF DETAILS SHOWN AND THE PRODUCT IN CONFORMANCE TO SAME. THESE DESIGNS AND DRAWINGS ARE THE EXCLUSIVE PROPERTY OF SMOKE GUARD, INC. AND ARE NOT TO BE USED OR DUPLICATED WITHOUT PERMISSIONS.

| REVISION        |               |                      |
|-----------------|---------------|----------------------|
| REVISION NUMBER | REVISION DATE | REVISION DESCRIPTION |
| D1              | 9.16.20       | INITIAL RELEASE      |
| ---             | ---           | ---                  |

QUOTE: ----  
CONFIGURATION: ----  
PROJECT: ----  
DIST.: ----

|  |                  |
|--|------------------|
| DESIGN SET: D1                           | SIZE<br><b>B</b> |
| MODEL: M600                              | SHEET            |
| SHEET TITLE:<br>M600 READY STATE DETAILS | 2 OF 4           |
| DRAWN: TLM                               | 9.16.2020        |

- M600 GENERAL NOTES:
1. CLIENT TO PROVIDE CONTINUOUS MOUNTING SURFACE FOR STRUCTURAL AND SHEET METAL ATTACHMENT.
  2. ORDER LENGTHS TO BE AT 1/4" INCREMENTS ONLY.
  3. DIMENSIONS DO NOT INCLUDE HEADS OF EXTERNAL FASTENERS.
  4. SMOKE RATING FOR ENCLOSURE ABOVE HOUSING DESIGNED BY OTHERS.
  5. INTERNAL MOTORS ARE ACCESSIBLE THROUGH HOUSING OPENING WHEN UNIT IS DEPLOYED.



1 M600 DEPLOYED DETAIL  
SCALE: 1/2" = 1'-0"

REVISION

| REVISION NUMBER | REVISION DATE | REVISION DESCRIPTION |
|-----------------|---------------|----------------------|
| D1              | 9.16.20       | INITIAL RELEASE      |
| ---             | ---           | ---                  |
|                 |               |                      |
|                 |               |                      |

QUOTE: ----  
CONFIGURATION: ----  
PROJECT: ----  
DIST.: ----

DESIGN SET: D1

SIZE  
**B**

MODEL: M600

SHEET TITLE:  
M600 DEPLOYED DETAILS

SHEET

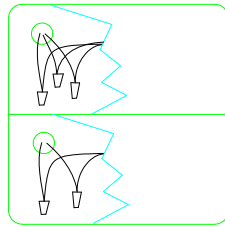
DRAWN: TLM 9.16.2020

3 OF 4

THESE DRAWINGS SHOW OUR INTERPRETATION OF THE PRINCIPAL PLANS AND SPECIFICATIONS. THEY ARE SUBMITTED AS CHECK PRINTS REQUIRING REVIEW AND POSSIBLE REVISIONS TO DETAILS AND/OR DIMENSIONS. BEFORE FABRICATION OF MATERIALS CAN BEGIN, DRAWING PACKAGE MUST MATCH O.P.M. ORDER AND BE RETURNED SIGNED AND DATED. IF THERE ARE SIZE DISCREPANCIES BETWEEN THIS DRAWING PACKAGE AND O.P.M. ORDER, THESE DRAWINGS SUPERCEDE O.P.M. DIMENSIONS. IF CONSIDERABLY DIFFERENT, A RE-SUBMITTAL OF O.P.M. ORDER WILL BE REQUIRED. THIS SIGNATURE INDICATES PURCHASER'S FULL ACCEPTANCE OF DETAILS SHOWN AND THE PRODUCT IN CONFORMANCE TO SAME. THESE DESIGNS AND DRAWINGS ARE THE EXCLUSIVE PROPERTY OF SMOKE GUARD, INC. AND ARE NOT TO BE USED OR DUPLICATED WITHOUT PERMISSIONS.

- M600 GENERAL NOTES:
1. CLIENT TO PROVIDE CONTINUOUS MOUNTING SURFACE FOR STRUCTURAL AND SHEET METAL ATTACHMENT.
  2. ORDER LENGTHS TO BE AT 1/4" INCREMENTS ONLY.
  3. DIMENSIONS DO NOT INCLUDE HEADS OF EXTERNAL FASTENERS.
  4. SMOKE RATING FOR ENCLOSURE ABOVE HOUSING DESIGNED BY OTHERS.
  5. INTERNAL MOTORS ARE ACCESSIBLE THROUGH HOUSING OPENING WHEN UNIT IS DEPLOYED.

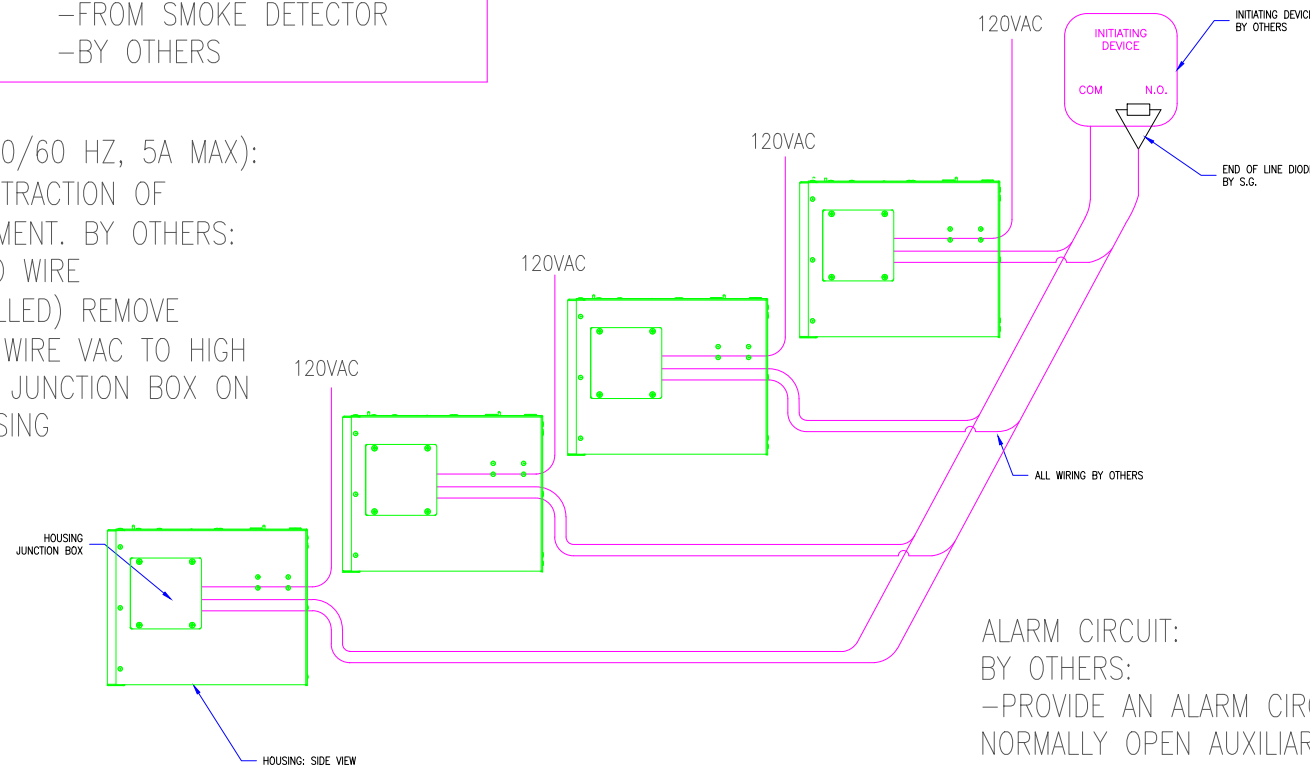
HOUSING JUNCTION BOX DETAIL  
(ACCESS AVAILABLE THROUGH INSIDE OF HOUSING)



100-240 VAC BY OTHERS  
GREEN--YELLOW--GROUND  
BLUE--NEUTRAL  
BROWN--HOT

LOW VOLTAGE CONNECTIONS  
-FROM SMOKE DETECTOR  
-BY OTHERS

100-240VAC POWER (50/60 HZ, 5A MAX):  
FOR MOTOR REWIND/RETRACTION OF  
SCREEN AFTER DEPLOYMENT. BY OTHERS:  
-PROVIDE CONDUIT AND WIRE  
-(AFTER UNIT IS INSTALLED) REMOVE  
TEMPORARY PLUG AND WIRE VAC TO HIGH  
VOLTAGE WIRES IN THE JUNCTION BOX ON  
THE SIDE OF THE HOUSING  
-PROVIDE GROUND



HOUSING JUNCTION BOX  
(ACCESS THROUGH INSIDE  
OF HOUSING)

THIS DRAWING ILLUSTRATES THAT UP TO  
4 HOUSINGS CAN BE WIRED, IN PARALLEL,  
TO THE SAME END-OF-DIODE AT AN  
INITIATING DEVICE (SMOKE DETECTOR)  
AUXILIARY CONTACT.

ALARM CIRCUIT:  
BY OTHERS:  
-PROVIDE AN ALARM CIRCUIT FROM THE  
NORMALLY OPEN AUXILIARY CONTACT OF THE  
SMOKE DETECTOR TO THE LOW VOLTAGE WIRES  
IN THE JUNCTION BOX ON THE SIDE OF THE  
HOUSING, USING STRANDED WIRES, IN RACEWAYS  
OR CONDUIT.  
-(AFTER UNIT IS INSTALLED) TERMINATE THE  
SMOKE DETECTOR WIRES TO LOW VOLTAGE  
WIRES IN THE JUNCTION BOX ON THE SIDE OF  
THE HOUSING.

SMOKE DETECTOR (UL 268 COMPLIANT) BY OTHERS:  
-PROVIDE A NORMALLY OPEN AUXILIARY CONTACT THAT IS  
ACTIVATED WHEN THE SMOKE DETECTOR GOES INTO ALARM. THIS  
CONTACT DOES NOT ACTIVATE ON GENERAL BUILDING ALARM.  
-(WHEN THERE ARE MULTIPLE-UNIT SYSTEM IN A COMMON AREA  
THAT ARE ACTIVATED BY A SINGLE SMOKE DETECTOR); WIRE UP  
TO 4 SMOKE GUARD UNITS TO A SINGLE SMOKE DETECTOR,  
IN PARALLEL. MULTIPLE UNITS ON A COMMON FLOOR THAT ARE  
ACTIVATED BY THE SAME SMOKE DETECTOR REQUIRE ALARM  
CIRCUIT WIRING FROM THE DETECTOR TO EACH UNIT. THE PRINTED  
CIRCUIT BOARD IN EACH HOUSING MUST SEE THE END-OF-LINE  
DIODE ON THE SMOKE DETECTOR.

END-OF-LINE DIODE:  
BY OTHERS:  
-INSTALL END-OF-LINE DIODE  
(FURNISHED BY SMOKE GUARD)  
AT INITIATING DEVICE.  
-IN PARALLEL WITH THE NORMALLY  
OPEN AUXILIARY CONTACT.

1 M600 ELECTRICAL DETAILS  
SCALE: N.T.S.

| REVISION        |               |                      |
|-----------------|---------------|----------------------|
| REVISION NUMBER | REVISION DATE | REVISION DESCRIPTION |
| D1              | 9.16.20       | INITIAL RELEASE      |
| ---             | ---           | ---                  |
|                 |               |                      |

QUOTE: ----  
CONFIGURATION: ----  
PROJECT: ----  
DIST.: ----

|  |                  |
|--|------------------|
| DESIGN SET: D1                         | SIZE<br><b>B</b> |
| MODEL: M600                            | SHEET            |
| SHEET TITLE:<br>M600 ELECTRICAL DETAIL | 4 OF 4           |
| DRAWN: TLM                             | 9.16.2020        |

THESE DRAWINGS SHOW OUR INTERPRETATION OF THE PRINCIPAL PLANS AND SPECIFICATIONS. THEY ARE SUBMITTED AS CHECK PRINTS REQUIRING REVIEW AND POSSIBLE REVISIONS TO DETAILS AND/OR DIMENSIONS. BEFORE FABRICATION OF MATERIALS CAN BEGIN, DRAWING PACKAGE MUST MATCH O.P.M. ORDER AND BE RETURNED SIGNED AND DATED. IF THERE ARE SIZE DISCREPANCIES BETWEEN THIS DRAWING PACKAGE AND O.P.M. ORDER, THESE DRAWINGS SUPERCEDE O.P.M. DIMENSIONS. IF CONSIDERABLY DIFFERENT, A RE-SUBMITTAL OF O.P.M. ORDER WILL BE REQUIRED. THIS SIGNATURE INDICATES PURCHASER'S FULL ACCEPTANCE OF DETAILS SHOWN AND THE PRODUCT IN CONFORMANCE TO SAME. THESE DESIGNS AND DRAWINGS ARE THE EXCLUSIVE PROPERTY OF SMOKE GUARD, INC. AND ARE NOT TO BE USED OR DUPLICATED WITHOUT PERMISSIONS.