

**Profile system**

- ☐ Standing slide and turn system
- ☐ Non-thermally insulated aluminum profiles with tempered safety glass
- ☐ The flush bottom track is particularly suitable for use in „Barrier-free dwellings“ according to DIN 18 025
- ☐ Panels can be stacked open either internally or externally
- ☐ Opening of panels by sliding to one side or to both sides
- ☐ Optionally with or without lateral vertical frame profiles
- ☐ Height variations can be compensated by a height compensation profile

**Fittings**

- ☐ All fittings are concealed within the profiles
- ☐ Low-maintenance, non-corroding and failsafe fittings
- ☐ Inside and/or outside locking and unlocking possible
- ☐ Locking and unlocking via turning knob
- ☐ Optionally with lever lock („child-proof“)

**Running assembly**

- ☐ The running assemblies consist of four vertically arranged rollers
- ☐ Low-noise, low-wear, heat and cold resistant running surfaces
- ☐ Running assemblies pivot at any angle between 90° and 180°

**Sealing and ventilation**

- ☐ Tongue and groove system between the panels
- ☐ Brush seals are used horizontally at the top and bottom, at the inside and outside
- ☐ Lower and upper brush gaskets are attached to the panel frames and not to the guide track

**Glazing**

- ☐ 8, 10, and 12 mm tempered safety glass panes (ESG-H)
- ☐ Panes width of up to 15 mm is possible
- ☐ Panes secured via concealed screw-fixing system in top and bottom panel profiles
- ☐ Subsequent replacement of panes without difficulty
- ☐ Subsequent replacement of panels without difficulty

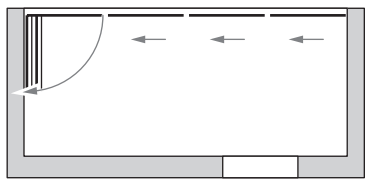
**Drainage**

- ☐ Unpressurised drainage via inclined floor construction
- ☐ Integrated water drainage channel on inside of bottom track
- ☐ End-caps for lateral sealing of bottom track



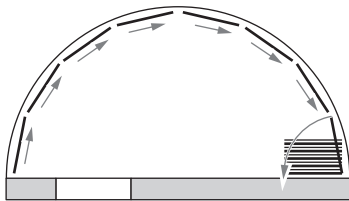
tested SUNFLEX quality

Straight Systems

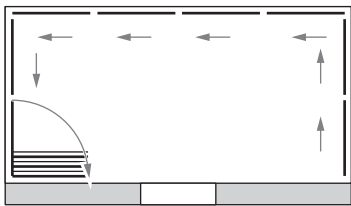


more special Systems on request

Segmented Systems



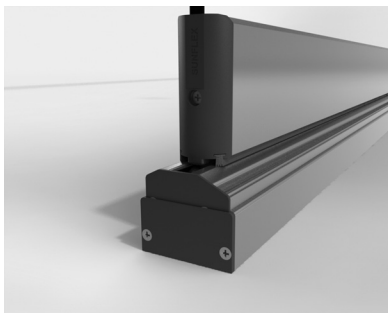
Angle Solutions 90°-180°



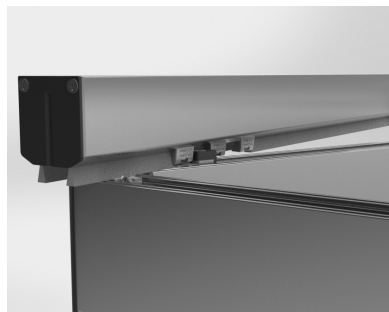
- Height compensation profile allows a height adjustment of +/- 5 mm



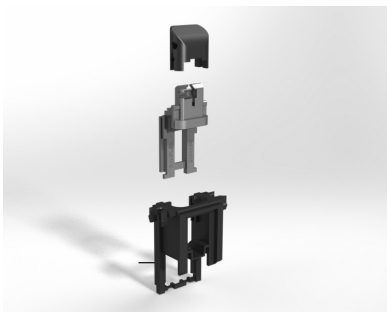
- Additional stability through tongue and groove joint between the end caps



- Adjustable profile end cap for height compensation profile and bottom track



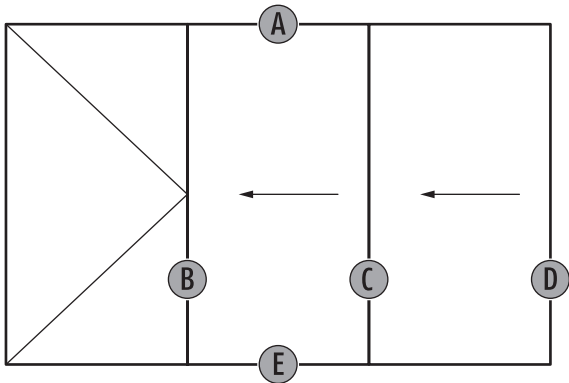
- Optimal panel guidance without guide arm when opening and closing



- Solid metal-reinforced locking slide for increased resistance to wind load

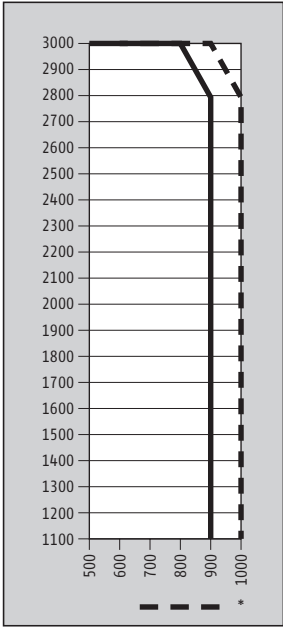


- Turn knob



Details at uneven panel partitioning in one direction

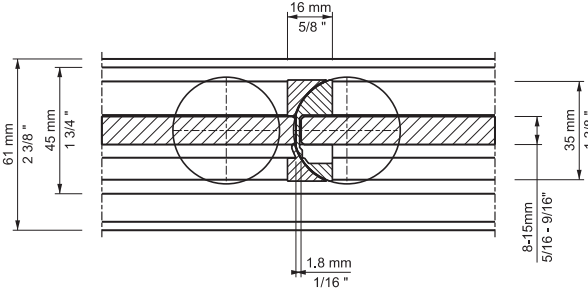
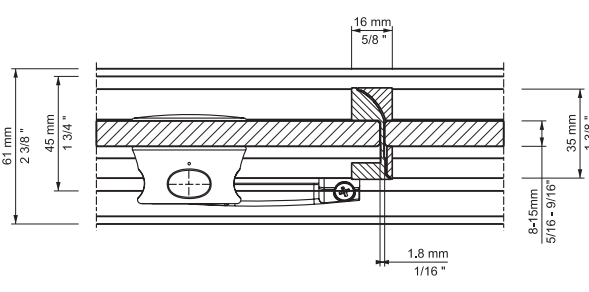
Panel size diagram



\* Other sizes in preparation

Ref.	Section	Description	Page
E	SF30-001	Vertical-Section, top track	4
E	SF30-003	Vertical-Section, bottom track	4
C	SF30-101	Horizontal-Section, sidewise wall junction	4
D	SF30-102	Horizontal-Section, sidewise wall junction	4
C	SF30-103	Horizontal-Section, panel – panel	5
B	SF30-104	Horizontal-Section, turn panel – slide panel	5

<div><div>E</div><div><div>OUTSIDE</div><div>INSIDE</div></div></div>		<div><div>E</div><div><div>OUTSIDE</div><div>INSIDE</div></div></div>	
Description: Vertical-Section, top track		Description: Vertical-Section, bottom track	
System: SF30		System: SF30	
Detail-No.: SF30-001		Detail-No.: SF30-003	
<div><div>C</div><div><div>OUTSIDE</div><div>INSIDE</div></div></div>		<div><div>D</div><div><div>OUTSIDE</div><div>INSIDE</div></div></div>	
Description: Horizontal-Section, sidewise wall junction		Description: Horizontal-Section, sidewise wall junction	
System: SF30		System: SF30	
Detail-No.: SF30-101		Detail-No.: SF30-102	

<div><div>C</div><div>OUTSIDE</div><div></div><div>INSIDE</div></div> <div><div>Description: Horizontal-Section, panel - panel</div><div><div>System: SF30</div><div>Detail-No.: SF30-103</div></div></div>		<div><div>B</div><div>OUTSIDE</div><div></div><div>INSIDE</div></div> <div><div>Description: Horizontal-Section, turn panel - side panel</div><div><div>System: SF30</div><div>Detail-No.: SF30-104</div></div></div>	
--	--	---	--



**Modernfold**Styles

**DISTRIBUTOR:**

New York, New Jersey, and greater Philadelphia area

**ModernfoldStyles, Inc.**

15 Empire Boulevard  
South Hackensack, NJ 07606

**Main:** 201.329.6226

**New York:** 212.684.4210

**Long Island:** 516.692.4100

802 King Avenue  
Cherry Hill, NJ 08002  
**Southern NJ / PA:** 856.665.1488

[www.modernfoldstyles.com](http://www.modernfoldstyles.com)