



MODERNFOLD





For over 100 years, architects, interior designers, and building owners have trusted Modernfold to deliver the ultimate in space flexibility and sound control to office buildings, classrooms, hotels, hospitals, retail centers, entertainment venues, and complexes. It is our pledge to make things simple for our customers by delivering to your needs and making you our priority.

Today, we further serve the market with top-of-the-line movable walls offering unsurpassed sound separation, automation, craftsmanship, and aesthetic design.

SUSTAINABILITY

Modernfold's commitment to producing sustainable and flexible space solutions that lessens our client's environmental footprint is unparalleled. Environmental impact reports, HPDs, EPDs, Indoor Advantage Gold certificate, LEED credits, and GBCI continuing education are readily available.

SERVICE

Modernfold's factory-certified installation and maintenance services are available throughout North America and in select international markets.

dormakaba 

Modernfold is a dormakaba Group company. dormakaba is the world's largest manufacturer of movable walls with a portfolio of Modernfold, Skyfold, and DormaHuppe brands.





TABLE OF CONTENTS

1. Acousti-Clear® The Sound Barrier	pg. 06
• Acousti-Clear® Product Portfolio	pg. 07
• Acousti-Clear® Motorized	pg. 08
• Acousti-Clear® Automatic	pg. 08
• Acousti-Clear® Demountable	pg. 08
• Acousti-Clear® Finishes	pg. 10
2. PureView® Modernity at its Finest	pg. 12
• PureView® Product Portfolio	pg. 14
• PureView®	pg. 14
• PureView® Plus	pg. 14
• PureView® GP	pg. 14
• PureView® Finishes	pg. 15
3. ComfortDrive® The Future is Now	pg. 17
4. Smart Track™ Effortless Set Up	pg. 21



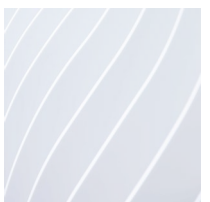




Acousti-Clear® The Sound Barrier

Modernfold's Acousti-Clear® glass wall system successfully delivers for those that demand both sophisticated sound separation and contemporary aesthetics.

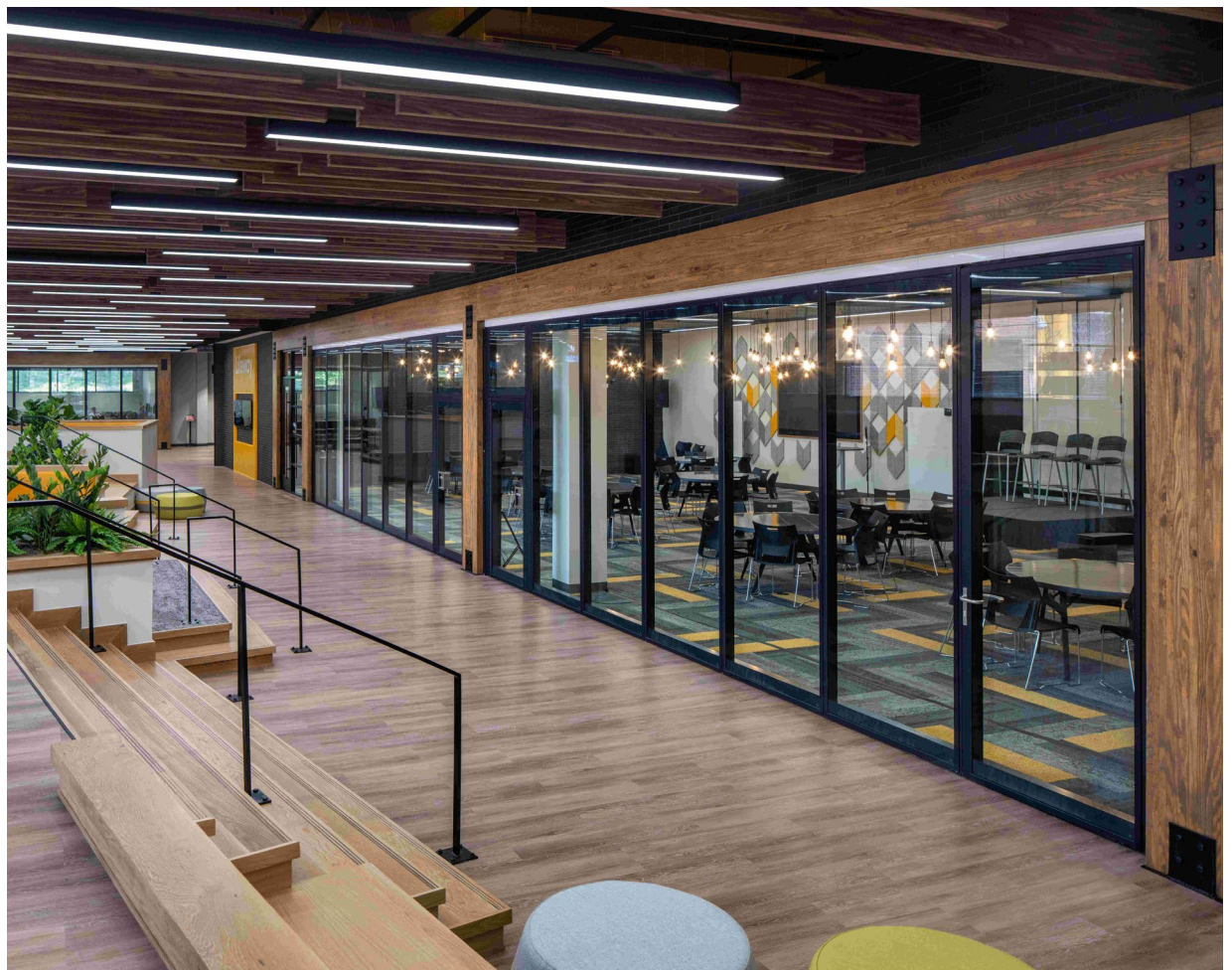
Second to none, Acousti-Clear® is the premier acoustical glass wall system with an ASTM-certified 51 STC. Bespoke engineering pioneered this one-of-a-kind product ensuring a sleek glass system could also offer high-end craftsmanship and durable performance. Brimming with the benefits of daylighting, Acousti-Clear® is the perfect union between beauty and utility.





Acousti-Clear® Product Portfolio

The Acousti-Clear® line offers a seamless aesthetic between its automated, movable or fixed panels, allowing you to intermingle and achieve the precise space division plan required.





Acousti-Clear® Motorized

Acousti-Clear® Motorized is the unsurpassed option on the market.

- Our one-of-a-kind, motorized ComforTronic® top and bottom seal system provides maximum and consistent acoustical control every time.
- Privacy is available with MorphGlas™ technology that immediately transitions the glass wall from opaque to clear – protecting both audio and visual privacy.



Acousti-Clear® Motorized on ComfortDrive®

As the ultimate finishing touch, Acousti-Clear® Motorized offers optional automation with ComfortDrive®, Modernfold's cutting-edge technology allowing for self-driving panels with the push of a button. Reference page 17 for more information.



Acousti-Clear® Automatic

Acousti-Clear® Automatic presents both single and paired panel system options to maximize flexibility for complex layouts. Automatic top and bottom seals deploy – without cranks to turn or buttons to push – as each panel is advanced forward into the set position.

Acousti-Clear® Demountable

Acousti-Clear® Demountable is our fixed, glass partition offering that configures and reconfigures in virtually any set-up imaginable, bringing natural light into any modular environment. Sharing a matching appearance with the other Acousti-Clear® lines, our demountable option allows both fixed and operable walls to blend seamlessly.



Acousti-Clear® Finishes

Acousti-Clear® was designed to impress. Its clean lines provide the contemporary look and feel that is highly desired in modern day spaces. An abundance of finish options - automation, privacy, glass, finishes, and hardware – will bring your vision to reality.

Customize your Acousti-Clear® system to accentuate the surrounding design or make a bold statement. Standard with anodized aluminum frames, Modernfold also offers satin stainless anodized, and over 170 RAL powder coat colors.

Glass can also be customized with clear tempered, low iron, frosted, markerboard, mullions or appliques. Privacy options include our automated MorphGlass transitioning technology or privacy shades.



170 RAL
POWDER COAT
OPTIONS

Acousti-Clear® Motorized

Configuration	Single Panel
Acoustics	51 or 45 STC
Egress	Pass Door Panel Pivot Panel
Design	Glass Options Privacy Options Hardware Options Frame Options RAL Powder Coat Mullions
Automation	ComfortDrive® ComfortTronic® Seals

Acousti-Clear® Automatic

Configuration	Single or Paired Panel
Acoustics	51 or 45 STC
Egress	Pass Door Panel Pivot Panel
Design	Glass Options Frame Options Hardware Options RAL Powder Coat Mullions
Automation	N/A

Acousti-Clear® Demountable

Configuration	Fixed Panel
Acoustics	51 or 45 STC
Egress	Pivot Panel
Design	Glass Options Frame Options Hardware Options RAL Powder Coat Mullions
Automation	N/A

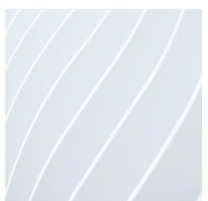






PureView® Modernity at Its Finest

The PureView® glass wall system is recognized by discerning designers for its superior-quality glass partitions and impressive spacescapes. PureView's highly desired capabilities exceedingly align to the requirements of everyday use: acoustical control, daylighting, space versatility, and easy operation.





PureView® Product Portfolio

The PureView® line offers harmonious design between its various sound separation, egress, and end user operability options. Single, paired or continuously hinged configurations allow you to specify success for the space. Fully-automated or manual operation are both available as well. No sacrifices need to be made in order to achieve performance objectives.





PureView®

A hallmark product, PureView® provides a sleek glass system with highly sought-after daylighting and end-user efficiency. Whether seeking uninterrupted sight lines or greater acoustical control, PureView® can be customized to your need. Complete with glass, rail finish, and security options, PureView® was designed with attention to every detail.



PureView® Plus

PureView® Plus builds upon the success of PureView® and offers a convertible panel for egress in various layout combinations. The concealed door closer and hardware options elevate the product portfolio.

PureView® on ComfortDrive®

As the ultimate finishing touch, PureView® and PureView® Plus offer optional automation with ComfortDrive®, Modernfold's cutting-edge technology allowing for self-driving panels with the push of a button. Reference page 17 for more information.



PureView® GP

PureView® GP was engineered to offer uncomplicated elegance. Its gliding glass panels with flush-mounted, stainless-steel fixtures improve the functionality of a space while maintaining its desired daylighting benefits and openness.



PureView® Finishes

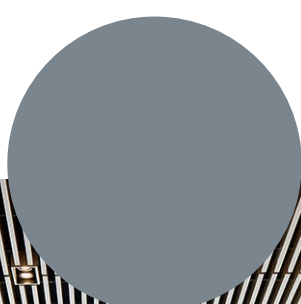
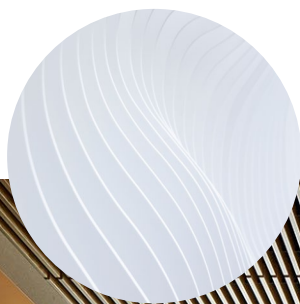
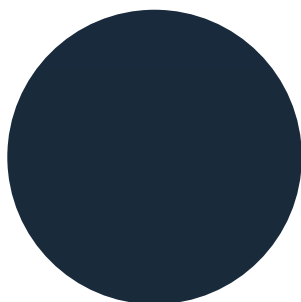
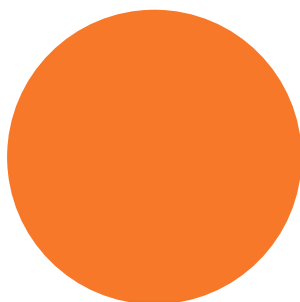
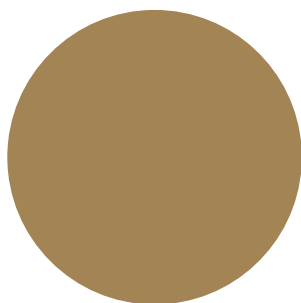
PureView® leaves a lasting impression. Boasting a sleek profile with modern finishes, it will enhance any space with its sophisticated sightlines.

Create a show stopper in a high-traffic space or accentuate your current aesthetic. Standard with anodized aluminum frames, Modernfold also offers black anodized, dark bronze anodized, satin stainless anodized finish, and over 170 RAL powder coat colors.

Glass can also be customized with clear tempered, low iron, frosted, markerboard or appliques.



170 RAL
POWDER COAT
OPTIONS



PureView®

Configuration	Single Panel Paired Panel Continuously Hinged Panel
Acoustics	37 STC Fully Framed 35 STC Fully Framed 33 STC Fully Framed 15 STC Unframed
Egress	Pivot panel
Design	Glass options Frame options RAL powder coat Hardware options
Automation	N/A

PureView® Plus

Configuration	Single Panel Paired Panel Continuously Hinged Panel
Acoustics	37 STC Fully Framed 35 STC Fully Framed 33 STC Fully Framed 15 STC Unframed
Egress	Pivot panel Convertible panel (single and paired panels only)
Design	Glass options Frame options RAL powder coat Hardware options
Automation	N/A

PureView® GP

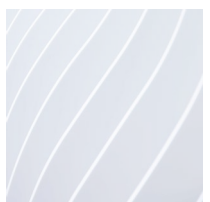
Configuration	Single Panel
Acoustics	15 STC
Egress	Pivot panel
Design	Glass options Hardware options
Automation	N/A





ComfortDrive® The Future is Now

ComfortDrive® is the preeminent movable wall suspension system ushering your design into the future. Featuring touchscreen operation with daylighting, ComfortDrive® provides the ultimate solution for your high-end space division needs. Specifically engineered to surpass expectations, ComfortDrive® delivers a fully-automated panel system with the push of a button. Self-driving, it independently guides glass wall systems to one of four custom configurations.







ComfortDrive®

As a service to the occupants, ComfortDrive® eliminates manual set up and automatically comes with a full suite of built-in safety features, providing any novice the ability to convert space quickly. ComfortDrive® is UL certificated ensuring that safety requirements are met.

ComfortDrive®'s transformative technology pairs with either Acousti-Clear® Motorized or PureView® glass panel systems to offer a selection of preprogrammed positions suited to your space needs. Acousti-Clear® Motorized on ComfortDrive® can specifically provide enhanced sound control offering up to 51 STC, while PureView® on ComfortDrive® can provide single pane flexibility up to 37 STC.

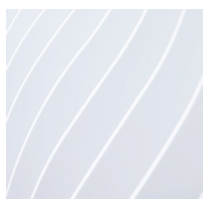






Smart Track™ Effortless Set Up

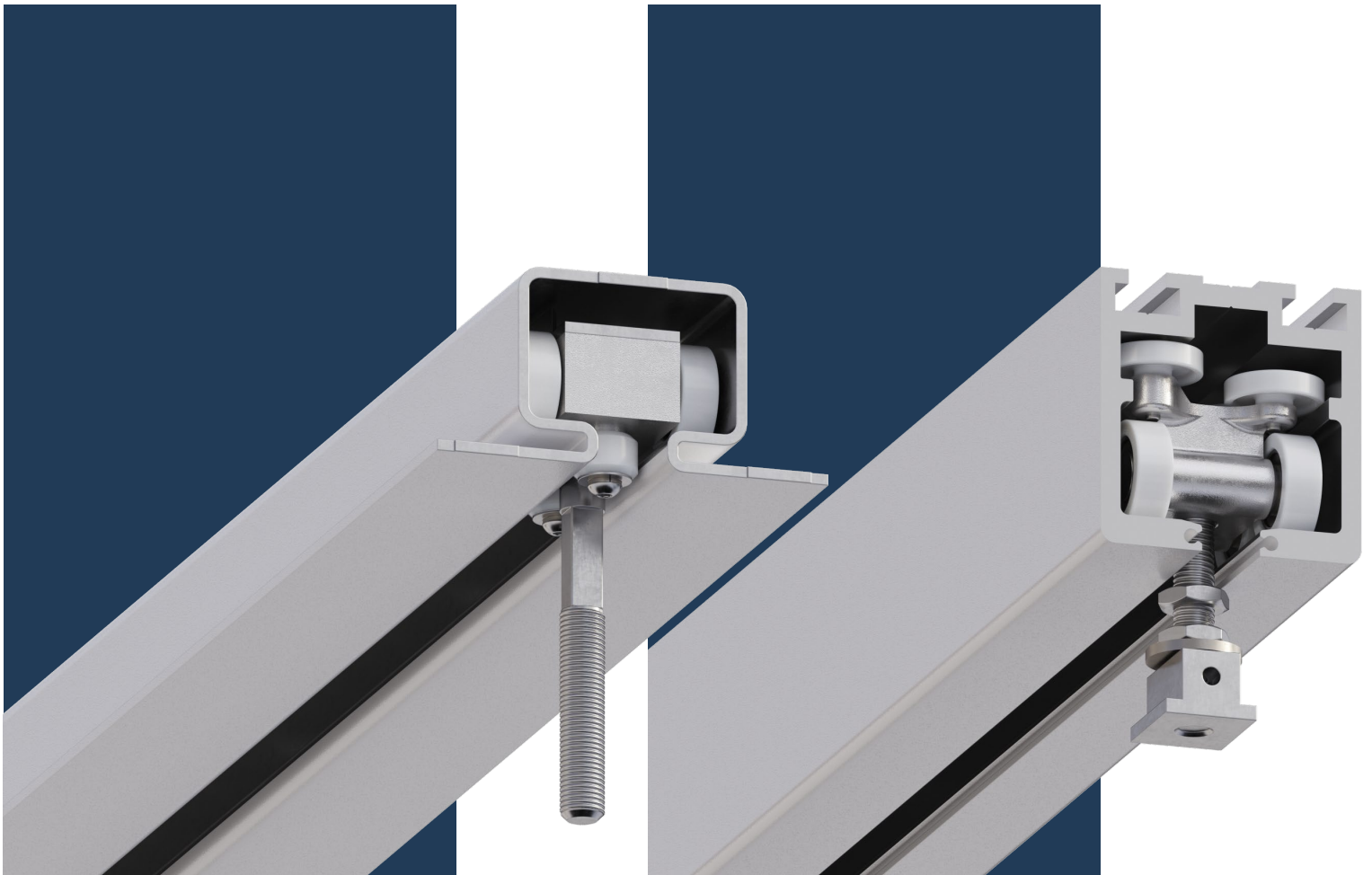
Modernfold's Smart Track™ technology has transformed traditional track and trolley systems. Our G-330 and #17G track systems utilize Switch & Curve™ programmable track to feed panels to a variety of selected and customized layouts. Using predetermined carriers along the track, panels manually move as the track directs, putting themselves in the correct position and offering error-free set up.





Smart Track™ Effortless Set Up

With quiet and durable operation, the premium track option, G-330 runs on an aesthetically-pleasing aluminum track and offers a 2-year warranty, and the #17G track is made of steel and offers a 5-year warranty.



Hardware

Finalize your design with customize glass operable wall hardware options. Select from a variety of handles, panic hardware, locks, and finishes to streamline your design. These finishing touches can complete the vision, putting the flexibility of operable walls directly into the hands of your client.



Acousti-Clear Options: a. Rail Handle* b. Lever Handle* c. Panic Hardware

PureView Options: d. Tubular Door Pull e. TG9304 Door Pull f. TG138 Locking Ladder Handle g. Manet Ladder Handle h. Glass Knob i. Mortise Cylinder Locking Bolt – Keyed j. Mortise Cylinder Locking Bolt – Thumb Turn k. Interconnecting Floor Bolt

**Handle is also available in a locking option not currently displayed.*

